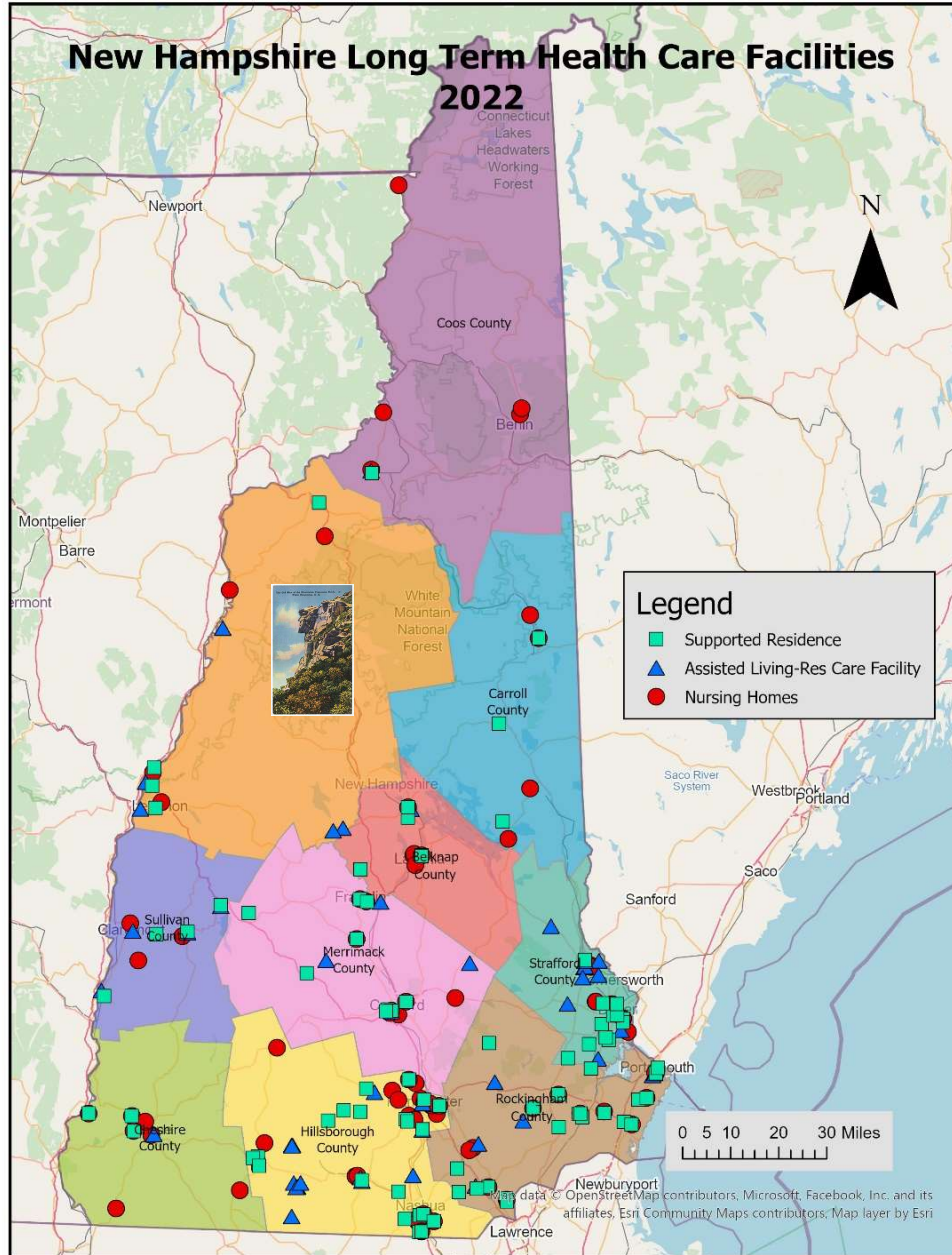




New Hampshire

Long-Term Health Care Facilities

Locational Demand Analysis





Executive Summary

Meeting the Demand for Long-Term Care Facilities in New Hampshire

This study reviews the existing New Hampshire Long-Term Health Care (LTC) Facilities and forecasts their demand for the year 2030 by Location, and Facility Type. The Facility Types are: Assisted Living/Residential Care Facility (AL/RCF), Nursing Homes (NursH), and Supported Residential Care Facility (SRCF).

The goal of this study is to present the order of magnitude numbers and inform LTC facility owners and operators, governmental, educators and other interested parties of the locational demand for Long-Term Care facilities in New Hampshire. A summary of expected costs and personnel requirements is also provided. Suggested initiatives to support the expansion and sustainability of New Hampshire's Long-Term Care (LTC) Facilities are outlined.

Looking at the data, New Hampshire is facing a burgeoning 65+ demographic and locational challenge in LTC facilities and caring for its seniors. This study reveals that the current facility and personnel commitment to LTC bed capacity and locations needs to be expanded to meet this challenge.

Key Findings:

- **The forecast indicates the need for 6300 additional beds in existing and 36 new service facilities by 2030.** The forecast utilizes a state top-down and county bottom-up forecasting process of the facility type, and bed counts, equating to approx. **780 additional beds per year.**
- **The 2022 to 2030 increase of 69,000 in the 65+ population is a result of the "Baby Boom".** The NH 65+ Population in 2022 was estimated at 262,000 with a 2030 population estimated at 331,000. The 65+ cohort wave is estimated to peak between 2035 and 2040.
- **In 2030 the 65+ Pop will constitute 24% of the NH's total Pop, with a max of 37% of Carroll County and min of 19% of Strafford's County's Pop.**
- **In 2022 the States Dependency Ratio is 69, consisting of 35 for 1-18 and 34 for 65+Pop.** Meaning 69 people are being supported by 100 age 19-64.
- **The 2022 availability of Facilities is uneven across the State.** Carroll County has 21 beds per 65+ 1000 population while Belknap County has 97 beds per 65+ 1000 population. Carroll County has no AL/RCF facilities. The State bed average is 53 beds per 1000 population 65+. (A similar 2022 study indicated Vermont's average is 49 B/1000 65+ pop).
- **The capital cost to build the new facilities is estimated between \$2.3 Billion and \$3.8 Billion** from 2022-2030.
- **The additional bed operating cost is estimated to be \$1.3 Billion** over the 2022-2030 period.
- **An additional 4570 LTC Staff members will be required by 2030,** consisting of Administrative and Nursing Staff.
- **There are presently (late 2022) 217 Long Term Care Facilities with 13948 Beds.** There are 89 SRCF facilities with 5279 beds, 49 AL/RCF facilities with 1257 beds, and 79 NursH facilities with 7412 beds.



Meeting The Challenge – Government Action:

The building of facilities and providing the personnel required for 6300 additional Beds over 9 years can be attained through coordinated action and resolve between the State of NH, City and Towns, and the Facility Owners and Operators. Below are suggestions to support the necessary growth and sustainability of Long-Term Health Care Facilities.

Support Facility Expansion -

- **Ensure investors and operators that State compensation for services is adequate** now and, continuing to cover the capital investment and operating costs.
- **Establish a State Director for Long-Term Health Care Facility Implementation.** This Director will facilitate actions between Facility Owners and Operators, State and Local governments, Financing, Education, and Building Contractor members to ensure the necessary facilities are built and provide annual reports to the State Executive and Legislative branches on Facility expansion.
- **Establish Quantifiable and measurable Long-Term Care Facility Objectives in the NH State Plan⁶ on Aging.**
- **Establish a Regional Long-Term Care Commission** among the Northeastern States to foster cooperation and long-term planning in such areas as; Education, Employment, Facility requirements, Personnel requirements, Tax policy, and co-ordinate when new facilities being built near a bordering state.
- **State to Coordinate with local Cities and Towns on zoning** and building approvals.
- **State to Co-ordinate the multiple capital funding sources.** Co-ordinate State, Federal and Private funding sources to facilitate the building of the new LTCF.
- **State/Federal Government. -Consider Underwriting/Guaranteeing Construction Loans, or partner with private sector.**
- **State to consider constructing facilities if private sector does not.**
- **Technology to support data for decision making. Establish a Facility Bed Inventory Database and web site for public identification of bed availability.** To Analyze and Forecast by Location, Facility Type and Service type a database needs to be established and maintained monthly.

Attract Long-Term Care Personnel –

The greatest challenge LTC providers have is attracting and keeping Health Care Professionals.

- **Offer Student tuition reimbursement** with an associated work time in the State.
- **Relocation expense reimbursement** for moving to NH or within NH.
- **Provide the Geographic based Living Wage** (as defined by the County specific MIT Living Wage Tables, <https://livingwage.mit.edu/>, for workers at these facilities in lieu of the state or federal minimum wage.
- **Ensure State and Regional Health Care educational facilities/programs are coordinated and available.**
- **Consider subsidized LTC workforce housing.** On site or nearby walking / mass transit distance to LTC Facilities.

6-New Hampshire Commission on Aging, Annual report, November 2023



Support Facility Operating Cost –

- **Provide annual support to the Medicaid per diem rate** to meet the provider’s cost for all types of facilities and home care services.
- **Reduce the facilities depreciation term from 37 to ex. 20 years.** State and Federal governments acknowledge that the Long-Term Care facilities, built in the next 10 + years may not have sufficient 65+ population with the passing of the “Baby Boomer Cohort” to economically operate.
- **Foster Building of Multi level facility types** (AL/RCF, SRCF, NursH) i.e., Continuing Care communities, for new locations and existing expansions.
- **Anticipate facility reuse in designs as baby boom population begins to decline in the 2040’s.**
- **Provide 55+ Housing, Work Force Housing, etc.**
- **Establish a lowered utility rate** category for the LTC Facilities (Water, Elec. Gas, Oil, etc.).
- **Establish a lowered State Corp Tax** category for LTC Facility companies.

Support Stay at Home Programs – Stay at home programs will continue to be an alternative to moving to an assisted living or a residence care facility, can defer moving to a nursing home, reduce hospital admittances and overall Medicare and Medicaid cost.

- **Offer home improvement grants** to help aging people modify and maintain their home.
- **Encourage building affordable ⁷ one level designs** and features for the aging population into new housing developments.
- **Ensure at home care personnel are certified, trained and properly compensated.**

Aging Effects on Other Facilities:

Although beyond the scope of this report it should be mentioned that an additional 69,000 people 65 and older in NH by 2030 will exert an impact on Hospitals, Home Care, Hospice services, Primary Care Physicians, and Nurses in and near NH.

⁷ Housing America’s Older Adults 2023 – Harvard Joint Center for Housing Studies November 30, 2023 [Housing America's Older Adults 2023 | Joint Center for Housing Studies \(harvard.edu\)](https://www.harvard.edu/joint-center-for-housing-studies/housing-america-s-older-adults-2023)



Executive Summary.....2

Contents.....5

New Hampshire Present LTC Facility Summary 20226

Present Geographic Distribution:.....8

 Nursing Homes - NursH:.....8

 Assisted Living/ Residences Care Facility – AL/RCF10

 Supported Residence Care Facilities - SRCF12

New Hampshire LTC Facility Bed Forecast14

 Demographics14

 County/Facility Type Bed Forecast.....19

Location Analysis:22

 Geographic Visual Analysis:.....23

 Hospital Serving Areas23

 Future Assisted Living Residences AL/RCF Location Areas.....24

 Future Nursing Home-NursH - Location Areas25

 Future Supported Residential Care Facility -SRCF Location Areas26

 New Facility Community Locations 2023-203027

Facility Capital Cost.....28

Facility Operating Cost29

Facility Personnel.....30

Facility Inventory Database32

Attachment 1 LTC Inventory List 2022.....33

 Nursing Home Inventory35

 Supported Residence Care Facility Inventory40

 Assisted Living/Residence Care Facility Inventory45

Table of Figures48

 Charts:.....48

 Tables:.....48

 Maps:49

 Bibliography, Distribution:50



New Hampshire Present LTC Facility Summary 2022

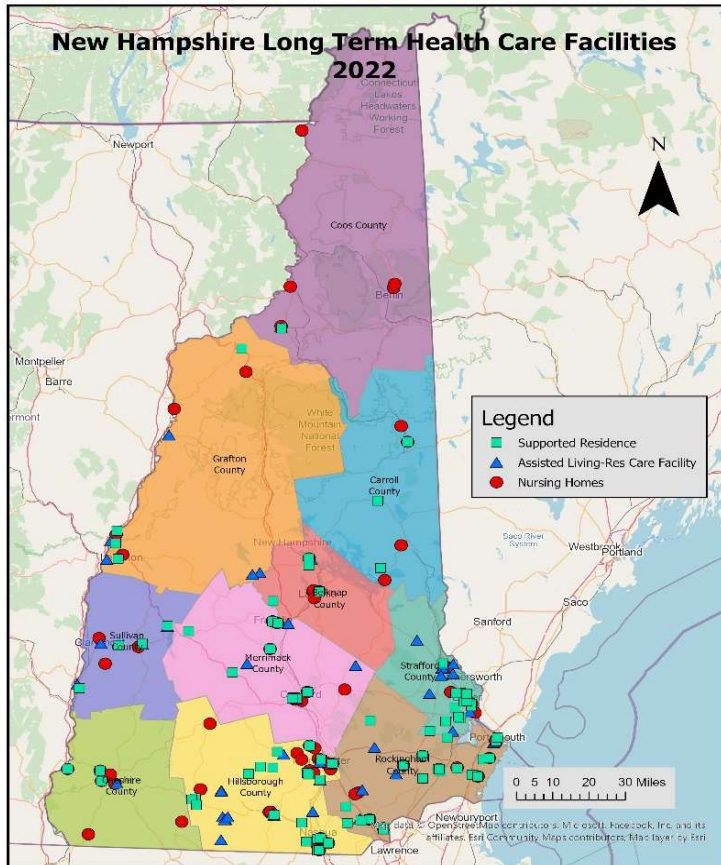
Present Facilities:

New Hampshire Long-Term Health Care Facilities (LTC) for this study are designated into three Facility Types, they are Assisted Living Residences Care Facility (AL/RCF), Supported Residential Care Facility (SRCF), and Nursing Homes (NursH).

There are 217 Long-Term Care Facilities in New Hampshire with 13,948 Long Term Care Beds. These beds are contained in 49 AL/RCF Facilities with 1257 Beds, 89 SRCF Facilities with 5279 Beds, and 79 NursH Facilities with 2299 Beds. A list of these facilities can be seen in Appendix 1, Page 35-45.

The adjoining Map1 and Chart1 indicate the three types of facilities in the State, with most locations near population centers, hospitals, and major highways.

There are no AL/RCF facilities in Carroll County. There are fewer Assisted Living Res Facility locations in the State overall. No Facilities in central Grafton, the Coos County facilities are spread out, this may be an opportunity to co-ordinate with VT on new joint facilities.



Map 1: All NH LTC Facility Geographic Locations

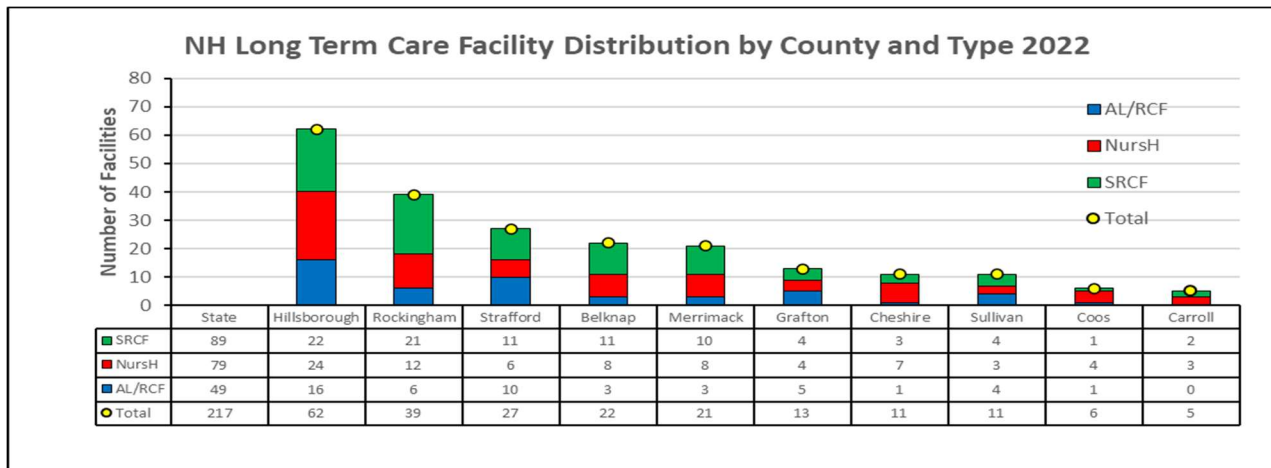


Chart 1: Facility Distribution by Type by County



Present LTC Facilities Cont.

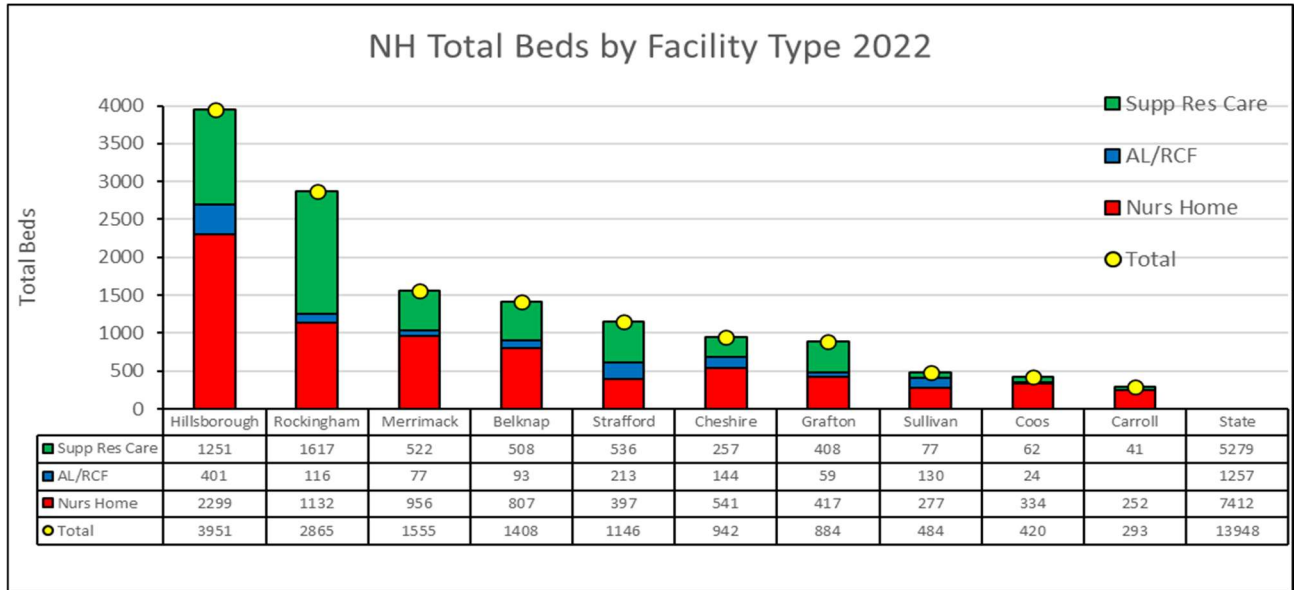


Chart 2: Total Beds by Facility Type by County

Supported Residential Care Homes are present in all counties and account for 41% of the State’s Beds. Nursing Homes are present in all counties and account for 53% of the State’s Beds. Assisted Living Residence Care Facilities are present in 9 of the State’s 10 Counties, accounting for 9% of the State’s 13,948 Total Beds.

Chart 3 indicates the 2022 Beds per 1000 Pop 65+. This creates a level index when reviewing present opportunities across the State by County and is used to forecast future locational demand.

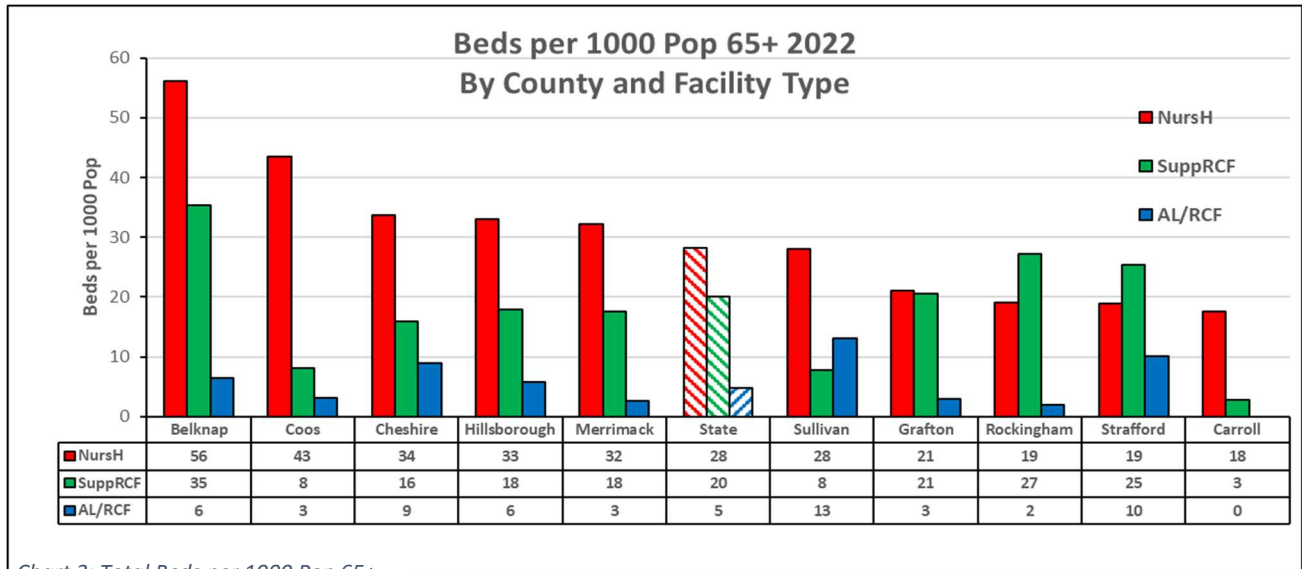


Chart 3: Total Beds per 1000 Pop 65+

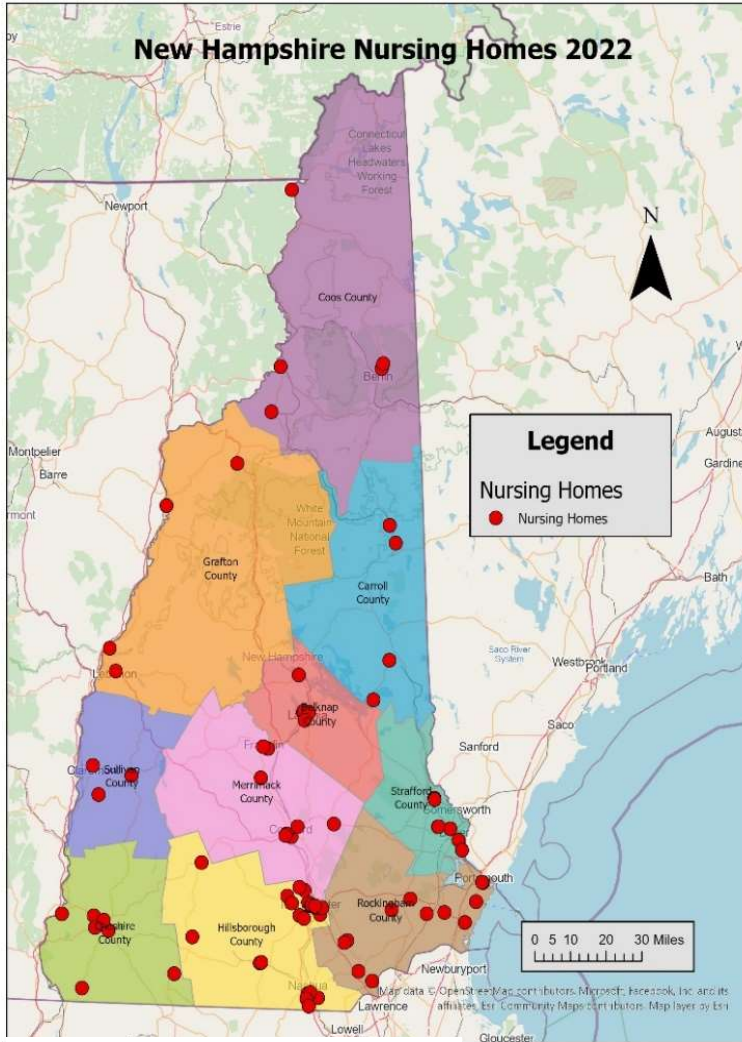
Data Sources: Facility inventory and historic county demographic data secured from the State of NURSH DLP¹ web site. Geographic data and spatial analysis utilized ESRI’s ArcGIS® software².

1, 2 See Bibliography



Present Geographic Distribution:

Nursing Homes - NursH:



Map 2: Nursing Home Geographic Locations

Indicated on Map 2 are the locations of NursH Facilities in New Hampshire.

Listed in the Charts below are indications of the various numbers of NursH facilities, by County and Facility bed size distribution.

There are 79 NursH Facilities, located in 10 counties with a total of 7412 Beds.

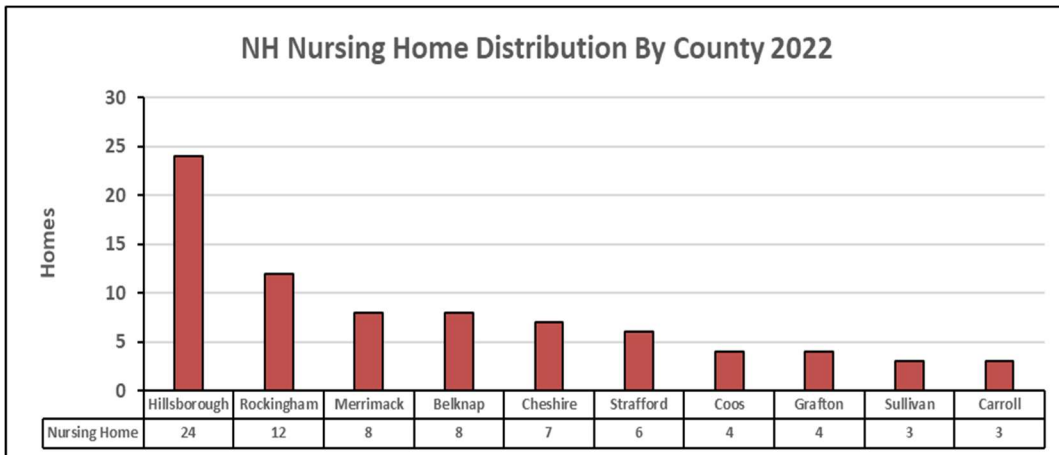


Chart 4: Nursing Home Facility Distribution by County



New Hampshire, Long-Term Health Care Facilities, Locational Demand Analysis

NurSH Facilities Cont.

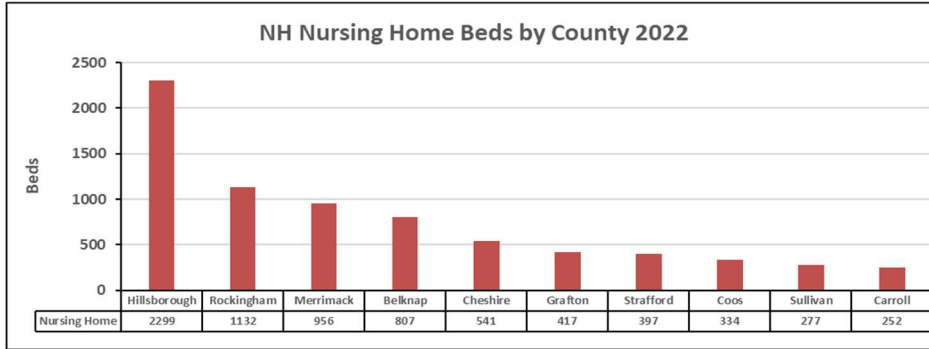


Chart 5 Indicates the number of NurSH Beds by county.

Chart 5: Nursing Home Beds by County

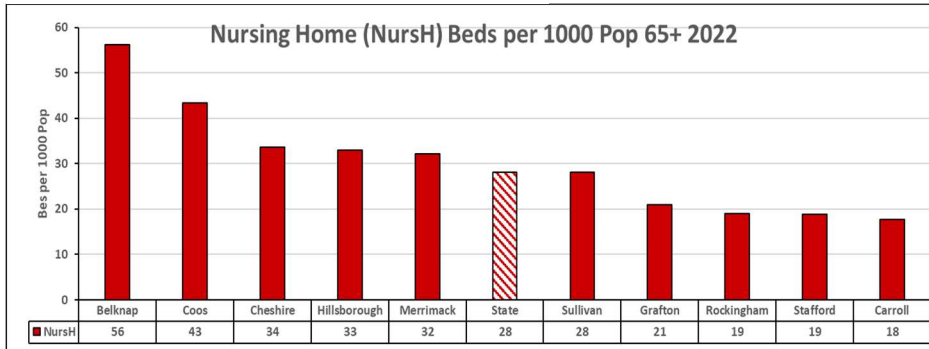
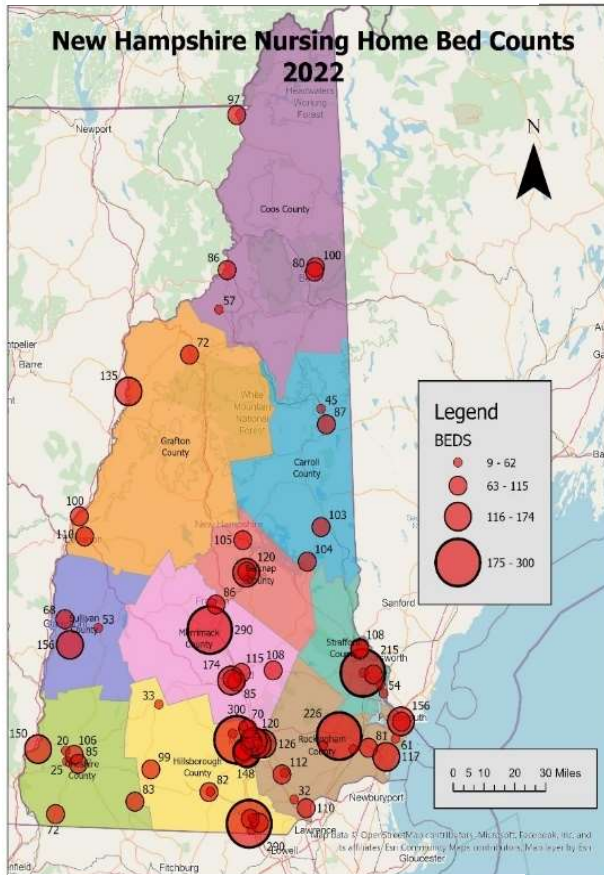


Chart 6 Indicates the Beds per 1000 pop 65+ by County.

Chart 6: Nursing Home Beds per 1000 Pop by County



Map 3 indicates the geographic distribution and total bed count of NurSH Facilities

Chart 7 – Indicates bed size distribution. Of the 79 NurSH Facilities, the average size is 29 Beds. The largest Facility being 300 beds in Goffstown, and the smallest one has 9 beds in Manchester.

Ex. There are 25 facilities with 9 to 67 beds, 41 facilities with 68 to 125 beds, etc.

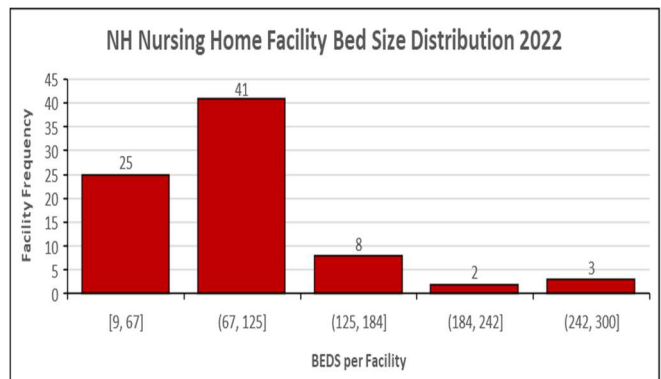


Chart 7: NurSH Facility Bed Size Distribution

Map 3: Nursing Home Bed Geographic Distribution



New Hampshire, Long-Term Health Care Facilities, Locational Demand Analysis

Assisted Living/ Residences Care Facility – AL/RCF

NH Defines AL/RCF as:

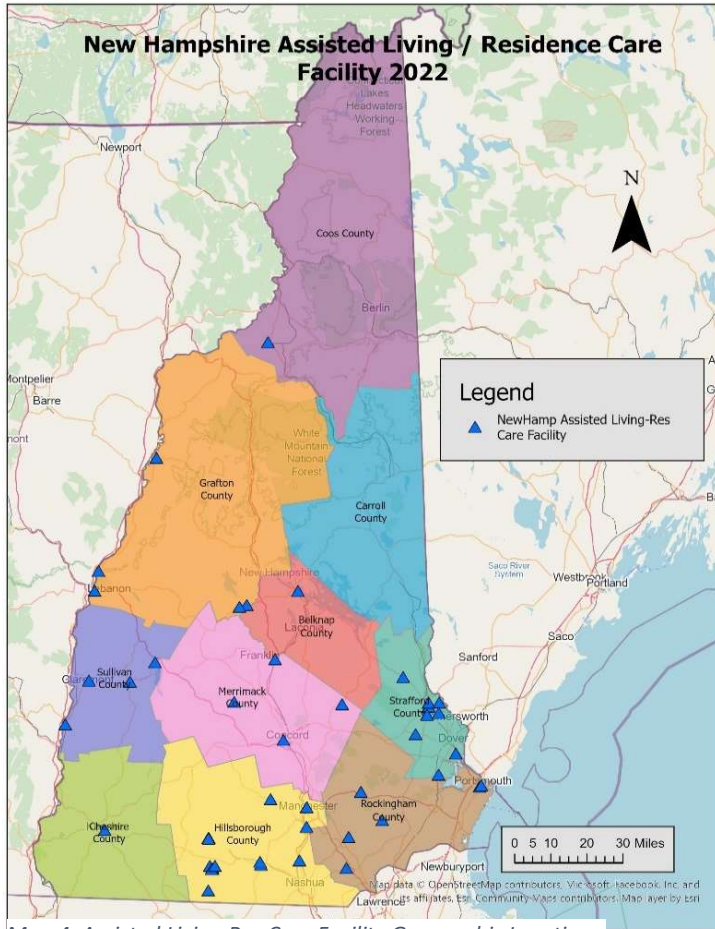
“Assisted Living Residences-Residential Care. Facilities offer assistance with personal and social activities that require a minimum of supervision, or health care that can be provided in a home or home-like setting.”

There are 49 AL/RCF Facilities, located in 6 counties, with 1257 total Beds.

Of note is the small number of Assisted Living Res (AL/RCF) Facilities (49) with their locations being available in 9 of the 10 Counties. Carroll County has no AL/RCF facility. Also, there is a lack of AL/RCF Facilities in the Central and Northern part of the State.

The 2030 AL/RCF Bed Forecast indicates a demand for growth in existing locations as well as the need for additional supplemental facilities in areas not presently within easy commuting distances to existing AL/RCF facilities.

Chart 8 indicates the AL/RCF facilities per county.



Map 4: Assisted Living Res Care Facility Geographic Locations

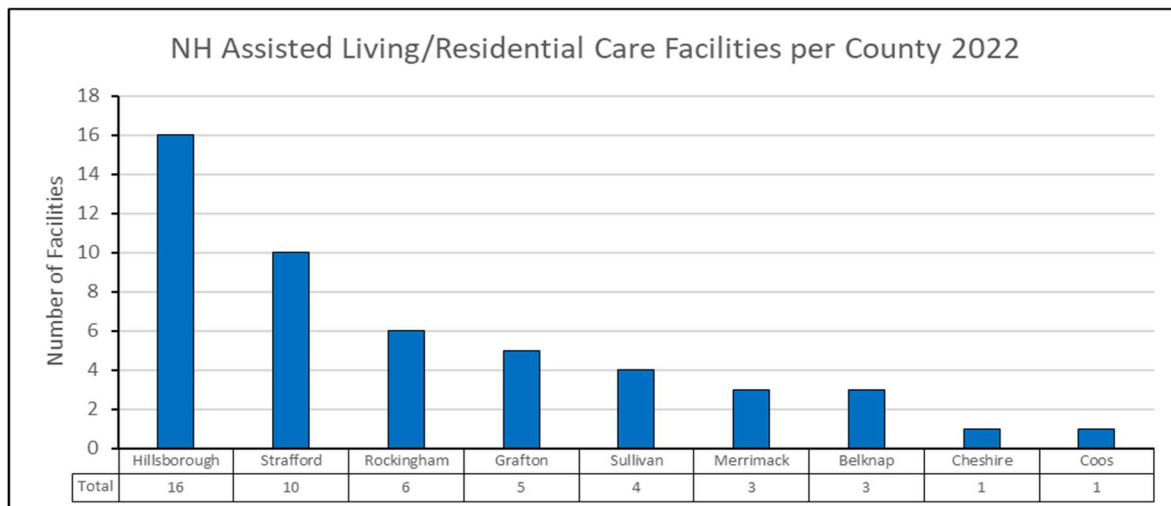


Chart 8: AL/RCF Facilities Per County



New Hampshire, Long-Term Health Care Facilities, Locational Demand Analysis Assisted Living/Residence Care Facility – AL/RCF Cont.

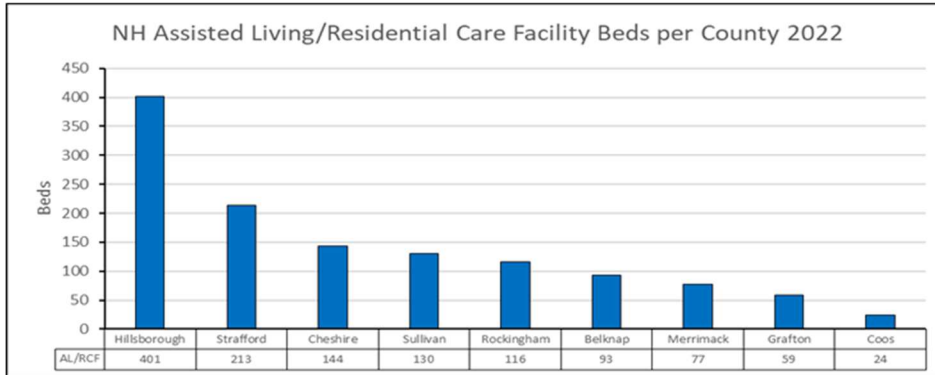


Chart 9: AL/RCF Beds by County

Chart 9 Indicates the number of AL/RCF Beds per County

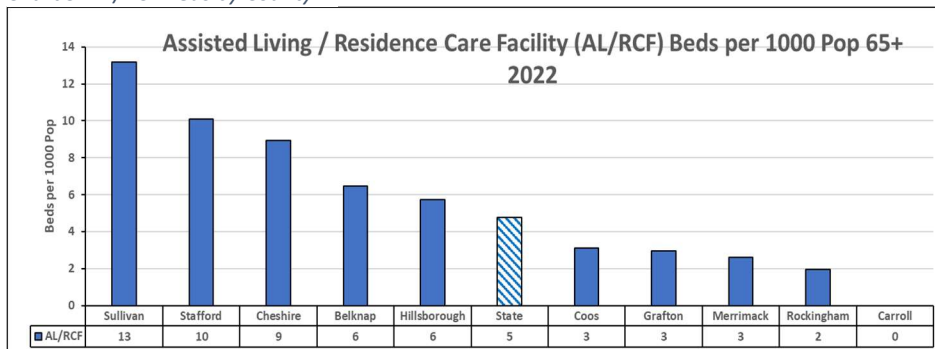
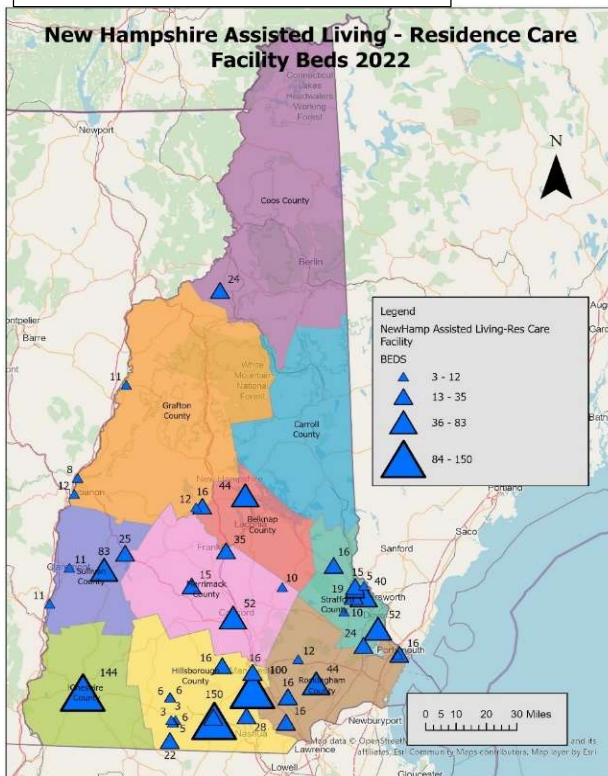


Chart 9A: AL/RCF Beds per 1000 Pop65+

Chart 9A Indicates the AL/RCF Beds per 1000 Pop65+per county.



Map 5: AL/RCF Bed Geographic Distribution

Map 5 indicates the geographic distribution of the AL/RCF Facility Total bed count.

The average AL/RCF Facility has 26 beds, with a distribution from the smallest of 3 beds in Greenfield to the largest with 150 beds in Milford.

EX. There are 39 Facilities that have between 3 to 32 beds, 6 Facilities with between 33 to 62 beds, etc.

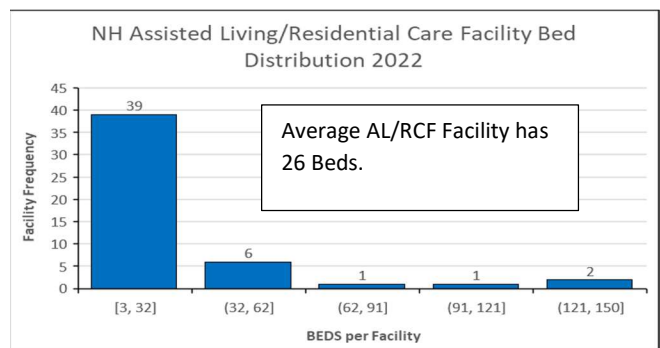


Chart 10: AL/RCF Facility Bed Inventory Distribution



New Hampshire, Long-Term Health Care Facilities, Locational Demand Analysis

Supported Residence Care Facilities - SRCF

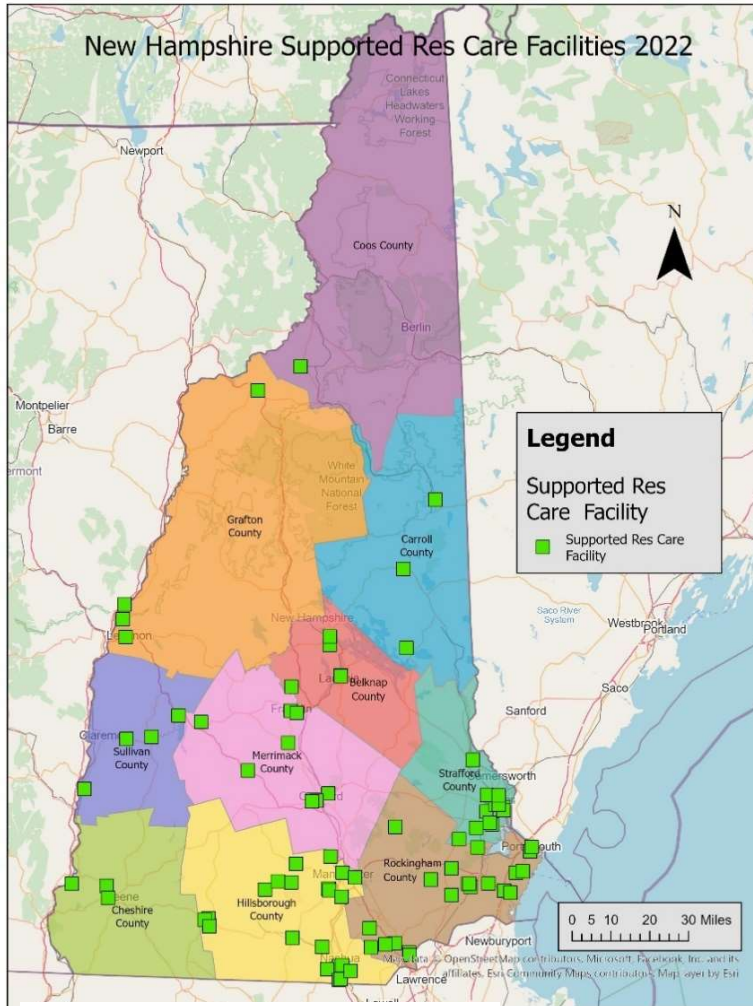
NH Defines SRCF as:

“Supported Residential Health Care. Facilities provide social or health services by appropriately trained or licensed individuals to three or more residents. Facilities may not serve those who require nursing services complex enough to require 24-hour nursing supervision. Facilities may provide short-term medical care for residents who may be convalescing from an illness and these residents must be capable of self-evacuation.”

SRCF’s are distributed throughout the State, with the exceptions being Central Grafton County and Coos County.

The 2030 SRCF Facility Forecast indicates a demand for growth in existing locations as well as the need for additional/supplemental facilities in areas not presently within commuting distances to existing SRCF facilities.

In 2022 there were 89 SRCF Facilities, located in 10 counties, with 5279 total Beds.



Map 6: SRCF Facility Geographic Locations

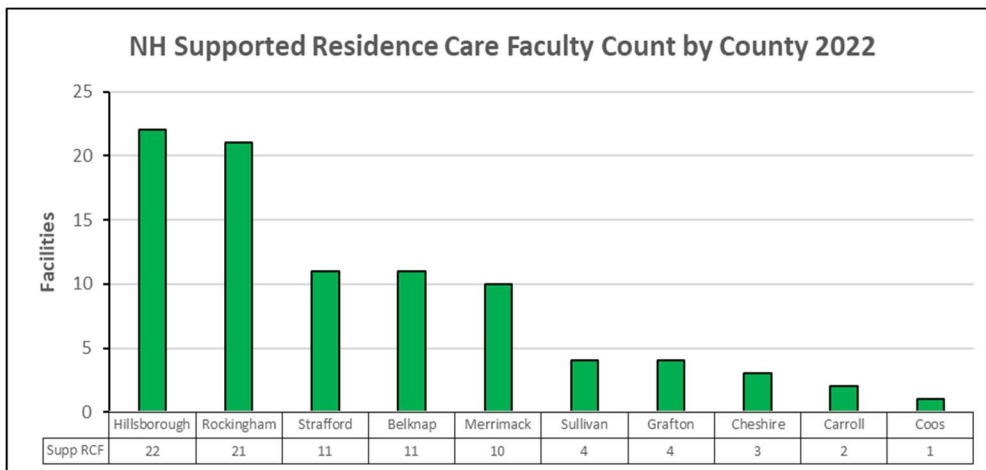


Chart 11: SRCF Facilities by County



New Hampshire, Long-Term Health Care Facilities, Locational Demand Analysis

Supported Res Care Fac - SRCF Cont.

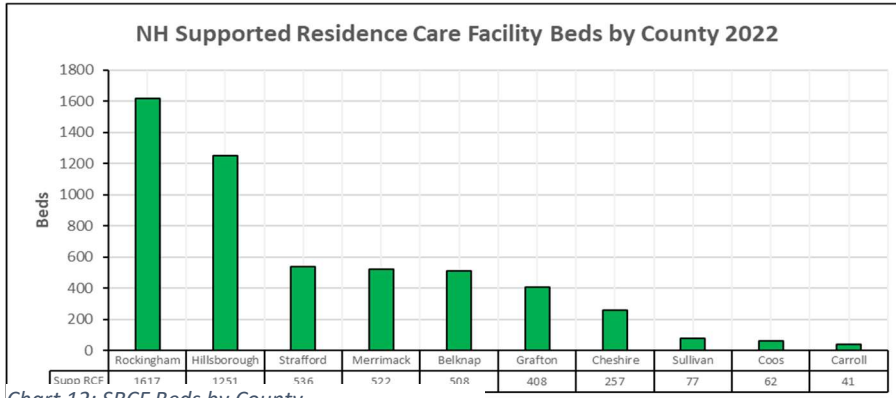


Chart 12: SRCF Beds by County

Chart 12 indicates SRCF Beds per county.

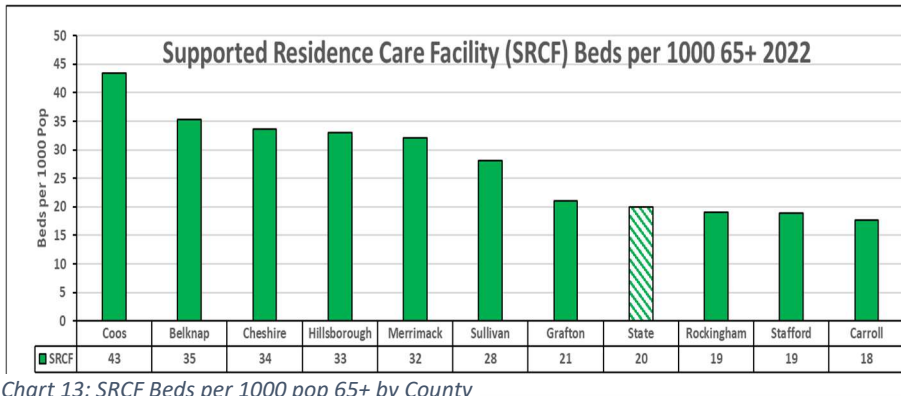
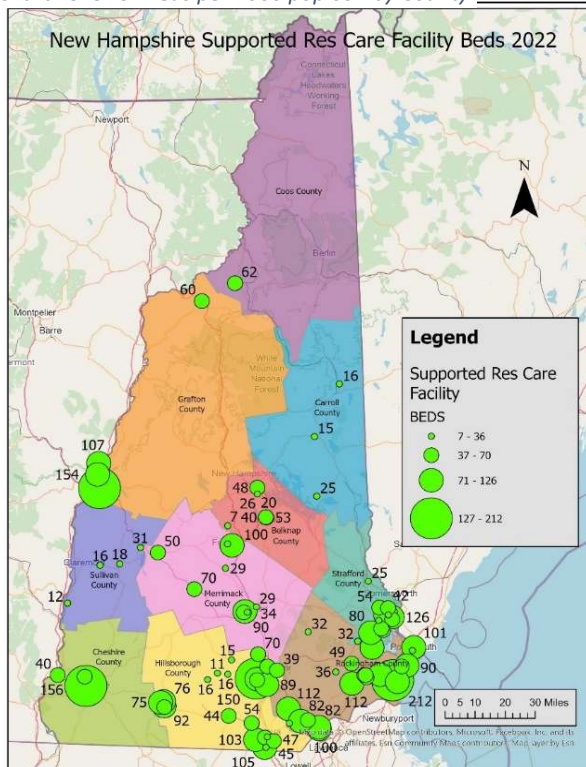


Chart 13: SRCF Beds per 1000 pop 65+ by County

Chart 13 indicates the county difference in bed availability per 1000 Pop 65+. A key indicator.

Map 7 indicates the geographic distribution of the SRCF Facility bed counts.



Map 7: SRCF Facility Bed Geographic Distribution

The average SRCF size is 79 beds per facility with the smallest one with 7 beds in Sanbornton to the largest one of 212 beds in Hampton.

Ex. There are 42 Facilities containing between 7 to 48 beds, there are 29 Facilities containing between 49 to 89 beds, etc.

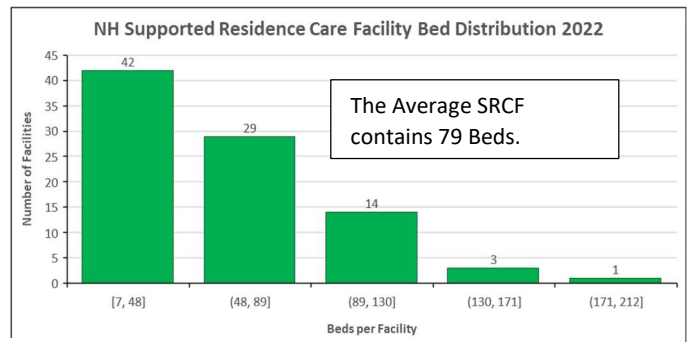


Chart 14: SRCF Bed and Facility Distribution



New Hampshire LTC Facility Bed Forecast

Demographics

Demographics is the driving force for the need of Long-Term Health Care Facilities. The Baby Boom Generation is a major group of people born between 1946 and 1964. This group in New Hampshire is much like the baby boom group in most of the Industrialized countries. This analysis projects the Census County data ages 65+ from 2023 to 2030 to determine the exiting number of Beds per 1000 Pop 65+ and projects the beds needed 2023 to 2030 by County.

In 2011 the first of the Baby Boomers cohorts reached the 65+ cohort, this group will last begin 65 in 2029 and this cohort will be a predominant driver for Long-Term Facilities until the 65+ cohort peaks between 2035 and 2040.

The States overall Dependency Ratio is 69, with a 35 Ratio for 1-18 and 34 for 65+ Pop in 2022. Meaning 69 people are being supported by 100 people age 19-64.

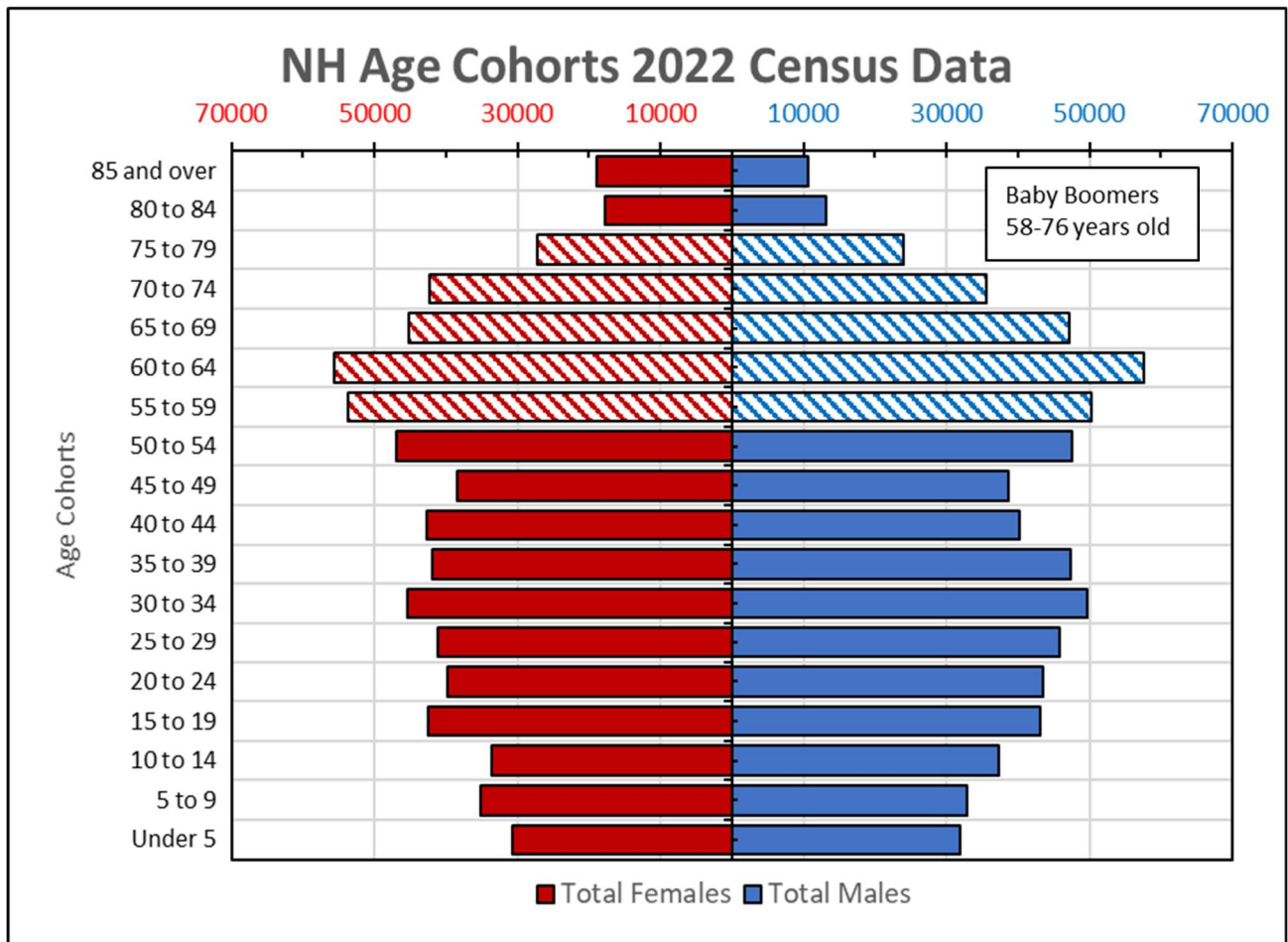


Chart 15: State Population Cohorts 2022

Source: US Census American Consumer Survey 1 year estimates 2022



Chart 16 Indicates the Gains for the 65+ population, the 1 to 64 age Population and the Total Population Years 2000 to 2022 are derived from US Census tables. This 2000 to 2022 data indicates an arising increase in the 65+ Pop and a reduction (negative Gain) in the 0 to 64 Pop. The Forecast numbers from 2023 to 2030 uses a constant level, middle of the road, forecast to ensure an overcount or undercount does not occur throughout the period of the study. It continues the 65+ cohort growth and increases the total population slightly.

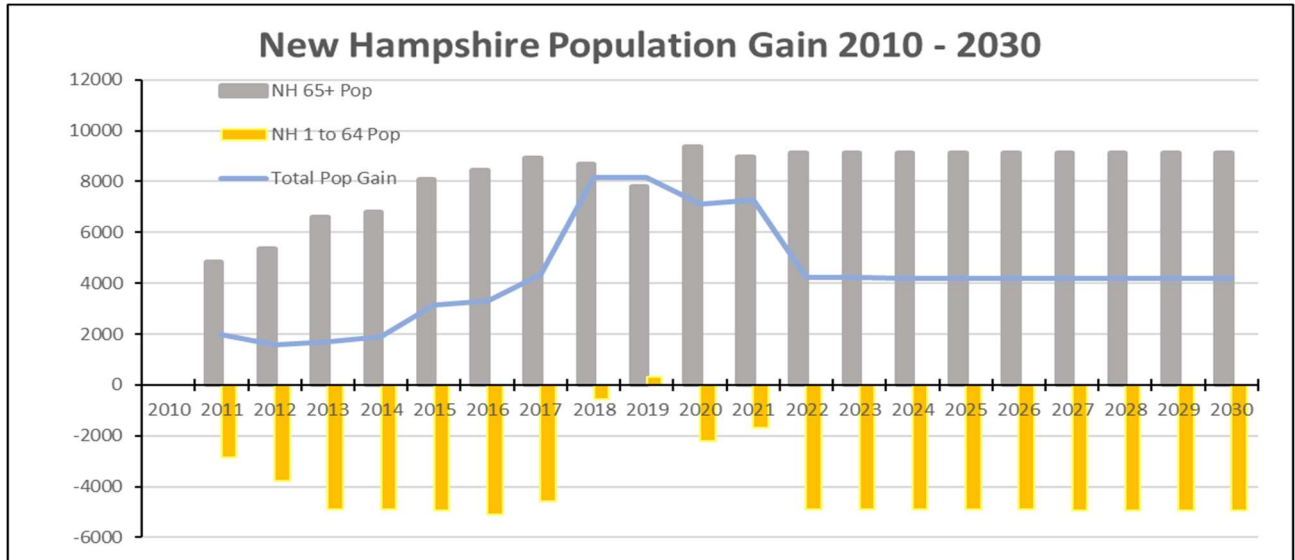


Chart 16: Population Gain 2010 to 2030

Chart 17 below Indicates the 2022 Pop 65+ of 262,113 increasing by 68,979 to a 2030 total State 65+ Population of 331,093.

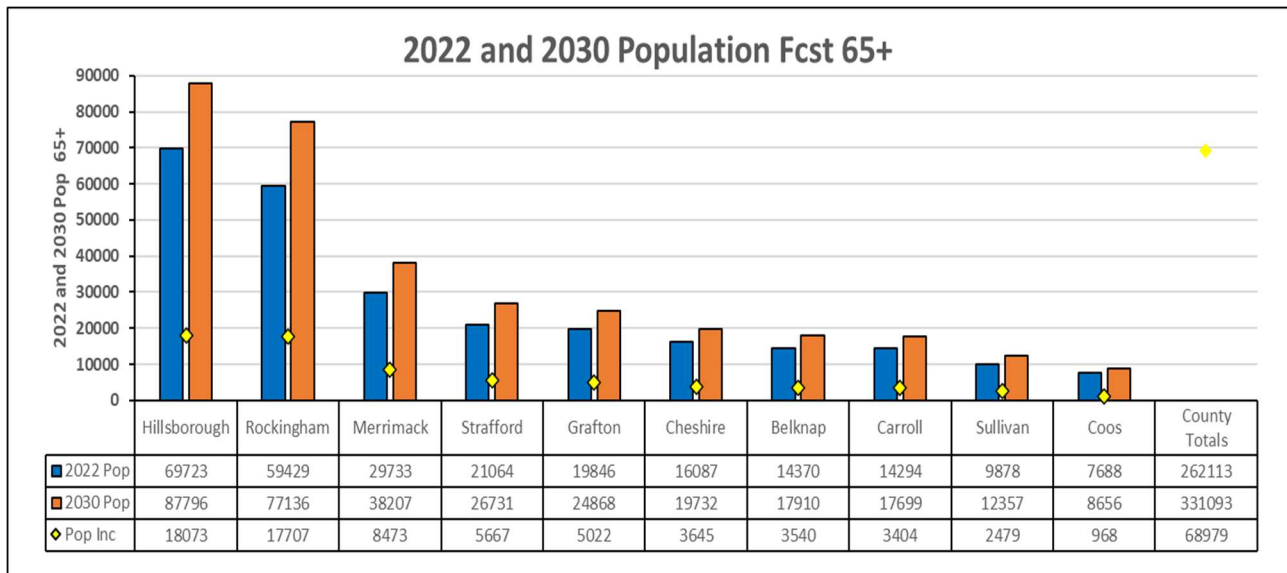


Chart 17 : State 2022 and 2030 Population Fcst 65+

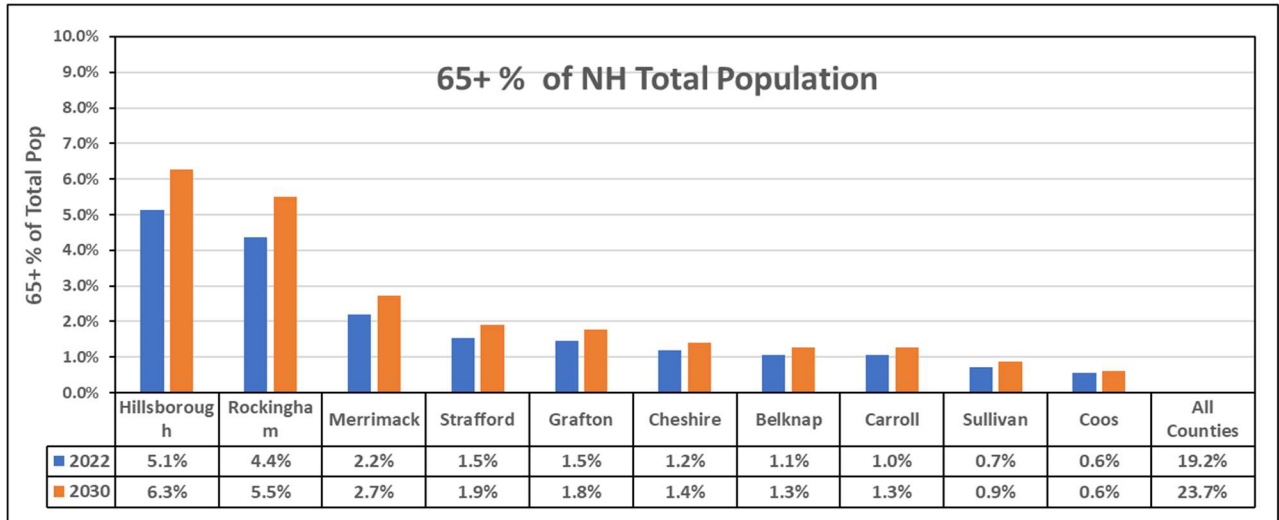


Chart 18: County 65+ as a % of the Total State Population

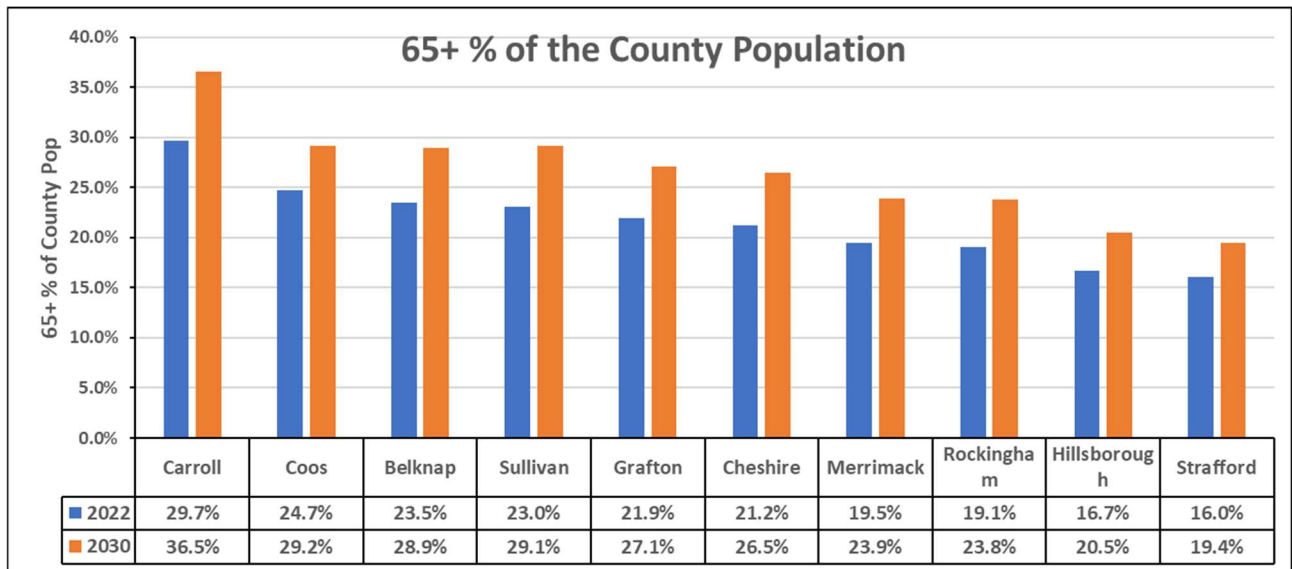
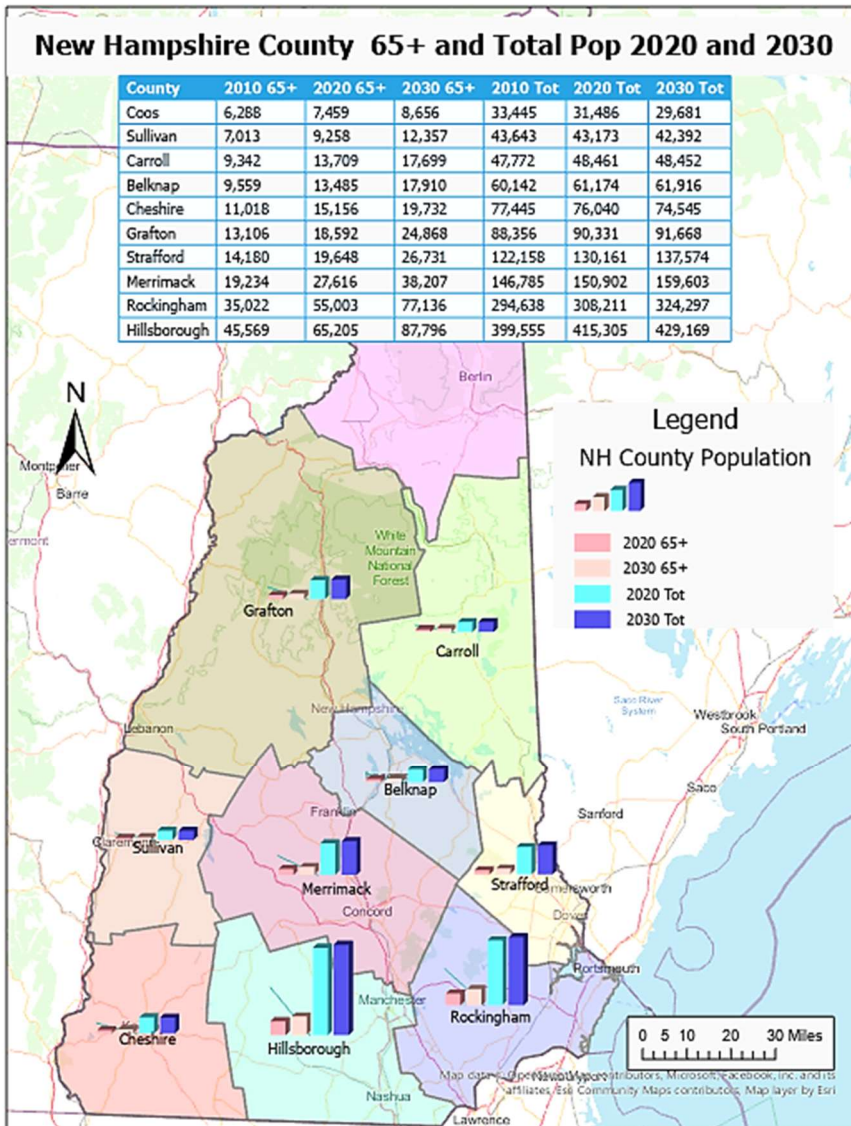


Chart 19: 65+ as a % of the County's Population



Demographics Cont.



This State map illustrates the 65+ and Total Population by County for the year 2020 and forecast year 2030.

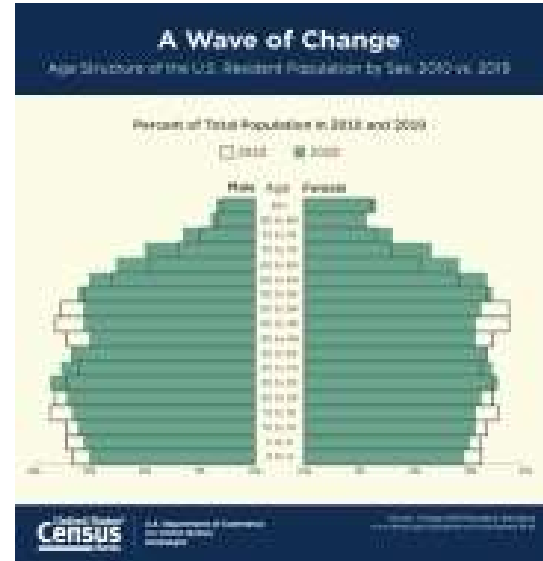
One can see the significance in population between the counties, and where future growth is primarily in the 4 largest counties.

Of note is the increase in 65+ Populations in all counties but a decrease or flat Total Population in the five smallest counties i.e., Coos, Sullivan, Cheshire, Carroll, and Belknap Counties, indicating an out migration, low birth rates or both.



U.S. Census Bureau Releases 2019 Population Estimates by Demographic Characteristics

JUNE 25, 2020 — The U.S. Census Bureau today released estimates showing the nation’s 65-and-older population has grown rapidly since 2010, driven by the aging of Baby Boomers born between 1946 and 1964. The 65-and-older population grew by over a third (34.2% or 13,787,044) during the past decade, and by 3.2% (1,688,924) from 2018 to 2019. The growth of this population contributed to an increase in the national median age from 37.2 years in 2010 to 38.4 in 2019, according to the Census Bureau’s [2019 Population Estimates](#).



The first Baby Boomers reached 65 years old in 2011,” said Dr. Luke Rogers, chief of the Census Bureau’s Population Estimates Branch. “Since then, there’s been a rapid increase in the size of the 65-and-older population, which grew by over a third since 2010. No other age group saw such a fast increase. In fact, the under-18 population was smaller in 2019 than it was in 2010, in part due to lower fertility in the United States.”

In 2019, over half (29) of the states had a median age older than 38.4 years, including all nine states in the Northeast.....

In 2019, one in five people in Maine, Florida, West Virginia and Vermont were age 65 or older. Maine had the largest share (21.2%) of population in that age group, followed by Florida (20.9%), West Virginia (20.5%) and Vermont (20.0%).

In 2020 New Hampshire’s 65+ Pop was at 19% of the States population, in 2030 this age cohort will be 24%.



New Hampshire, Long-Term Health Care Facilities, Locational Demand Analysis

County/Facility Type Bed Forecast

A Forecast of the population 65+ by County then a Bed requirement by Facility Type (AL/RCF, SRCF, and NursH) by County for the year 2030 was calculated.

Methodology:

The process used the 2022 Facility location addresses, Facility types and Service type inventory information provided by the State of NH DLP¹. (See Bibliography)

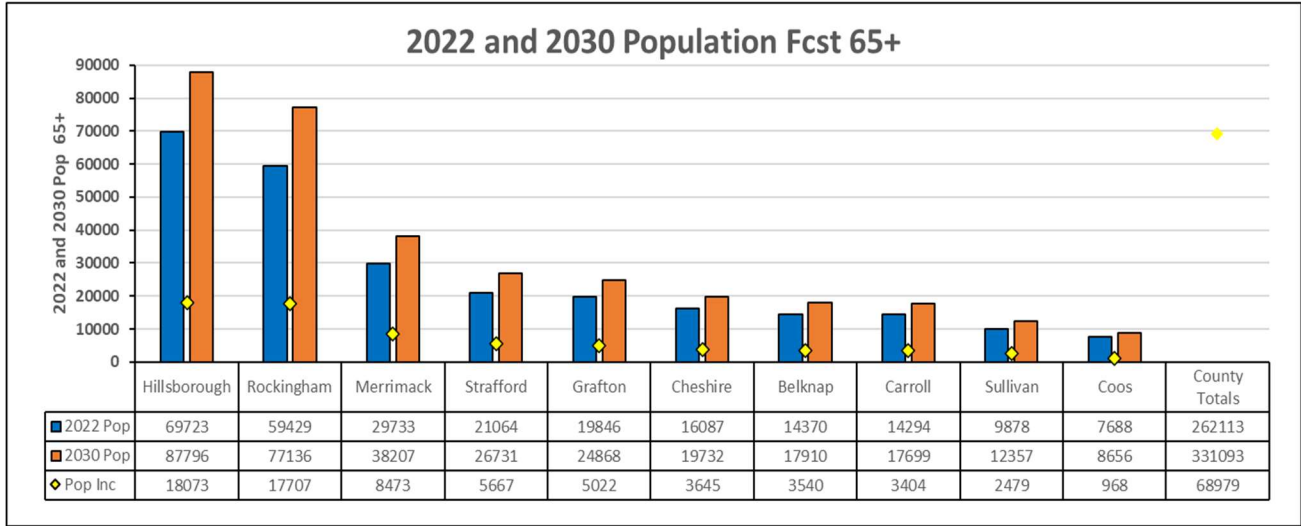


Chart 20: State 2022 and 2030 Pop Fcst 65+

The base Census demographic data was secured from the NH State web site and verified with US Census tables. The State web data was provided at State and County geographies for all 5-year cohorts from <1 to 85+ for each year 2000 to 2022. The 65-69,70-74, 75-79,80-84 and 85+ cohorts were summed to provide the 65+ group used in this analysis. The 65+ group was then projected from 2023 and 2030.

Dividing the 2022 Bed inventory numbers by the 2022 65+ group provided the 2022 Beds per 1000 population 65+ at the Facility Type for the State and each County Level.

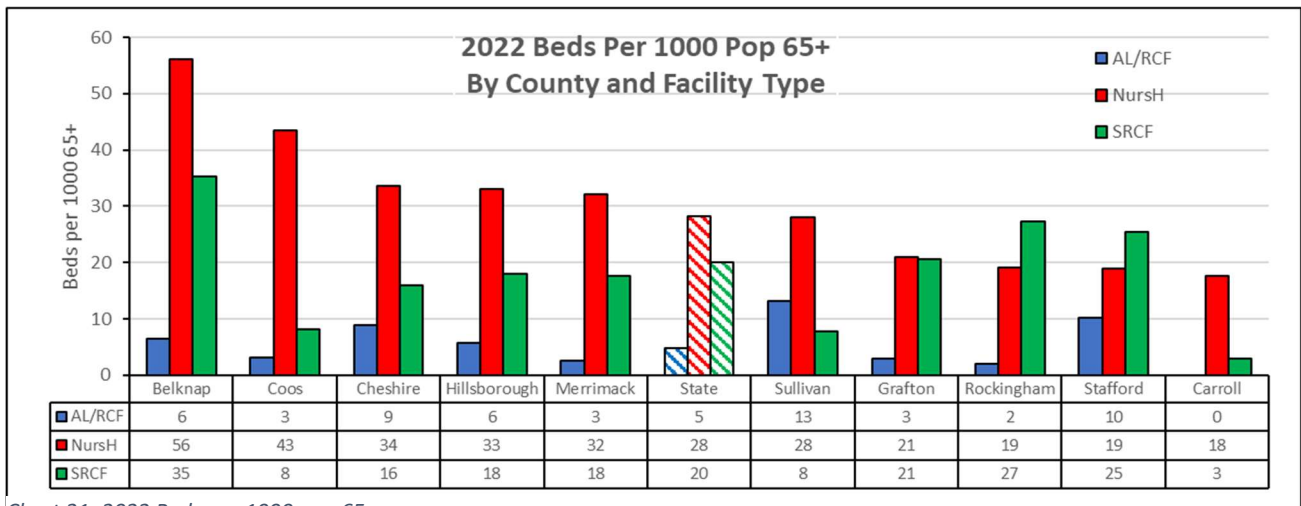


Chart 21: 2022 Beds per 1000 pop 65+



Bed Forecast Cont.

An essential assumption in the forecast is that Long-Term Care Facilities and Services are needed by and should be available for all New Hampshire citizens regardless of where they live. The forecast moves County bed counts to the state average if presently lower than that average and therefore increases facilities where they presently exist but also provides facilities and services in Counties where none presently exist.

Utilizing the Beds per 1000 Pop 65+ at the county level reflects the present overall market demand and reflects the impact of the many home care/stay at home programs being administered in that county.

A top down (State level data) bottoms up (County data) consensus forecast process was used to derive the 2030 Bed Requirements by Facility Types by County.

Methodology steps:

- Bottom-Up Forecast -The County Facilities and Service 2022 Bed per 1000 pop65+ is multiplied by the Counties 2030 Population Fcast., divided by 1000 to derive the 2030 Bed Fcast.
- Top-Down Forecast - The State 2022 Bed per 1000 pop 65+ is multiplied by the Counties 2030 Pop Fcast. Divided by 1000 to derive the 2030 Bed Fcast.
- The Final 2030 Bed consensus Fcast. Take the higher of the Top Down or Bottom-Up bed Fcast. This does not therefore reduce beds in counties that have more than the state average but raises those other counties to the state average.

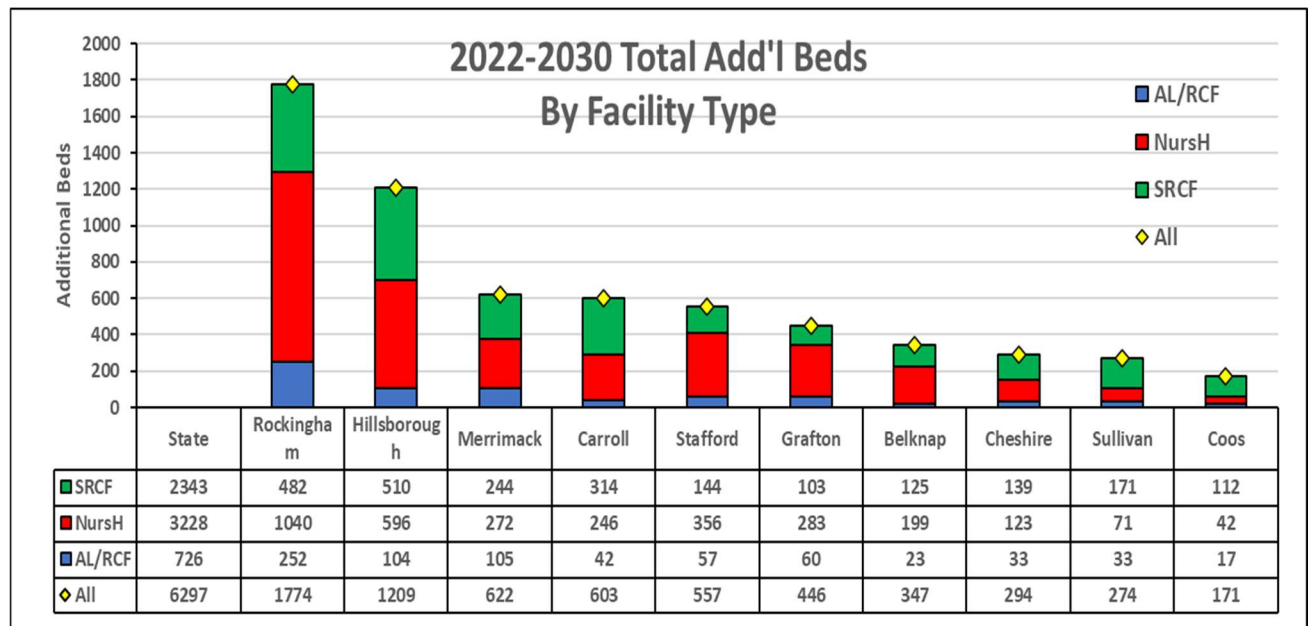


Chart 22: 2022 -2030 Total Add'l Beds

Chart 22 indicates the need for 6300 additional beds in the State by 2030.

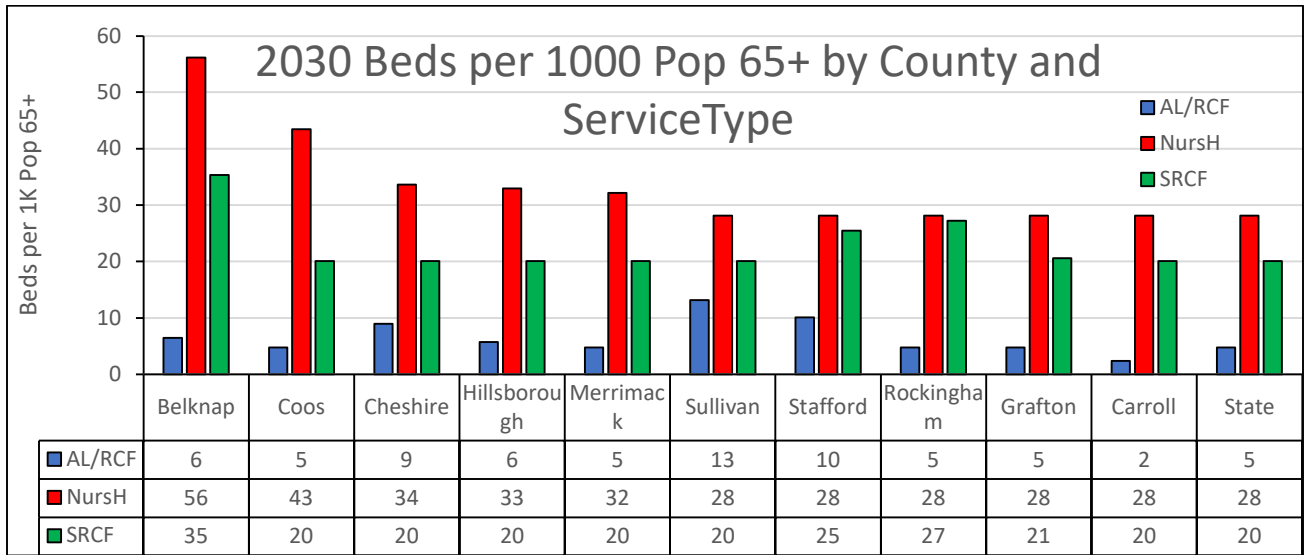


Chart 23: 2030 Total Beds per 1000 Pop 65+

Chart 23 above is a key indicator of equal opportunity to LTC Facilities among counties with the additional beds forecasted by 2030.

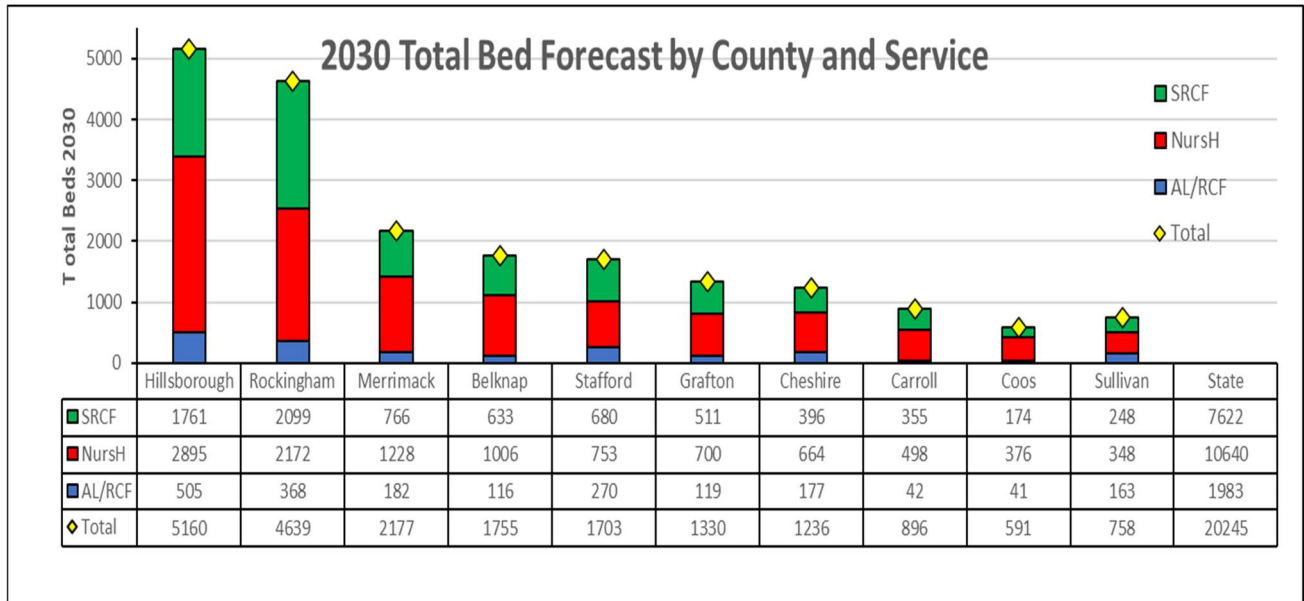


Chart 24: 2030 Total Beds in Service

The Chart above indicates the Total Beds required (20245) in 2030 by Facility Type and County.

The 2030 Forecast brings the proportionately equal availability of all Facility Types (AL/RCF, SRCF and NURSH) to citizens in all Counties.



Location Analysis:

Key Location Factors

The LTC Facility provides a geographic distance and time-based service area. The location of Long-Term Facilities is as important as the facility beds being available. Keeping the “Community Care Concept” alive is an important ingredient in assisting the Senior population as they progress through the Health Care Facilities Hierarchy. A facility near their existing community is essential to their well-being as well as their spouse, siblings, children, relatives, and friends. This concept is one of the main philosophies of the many home health care initiatives.

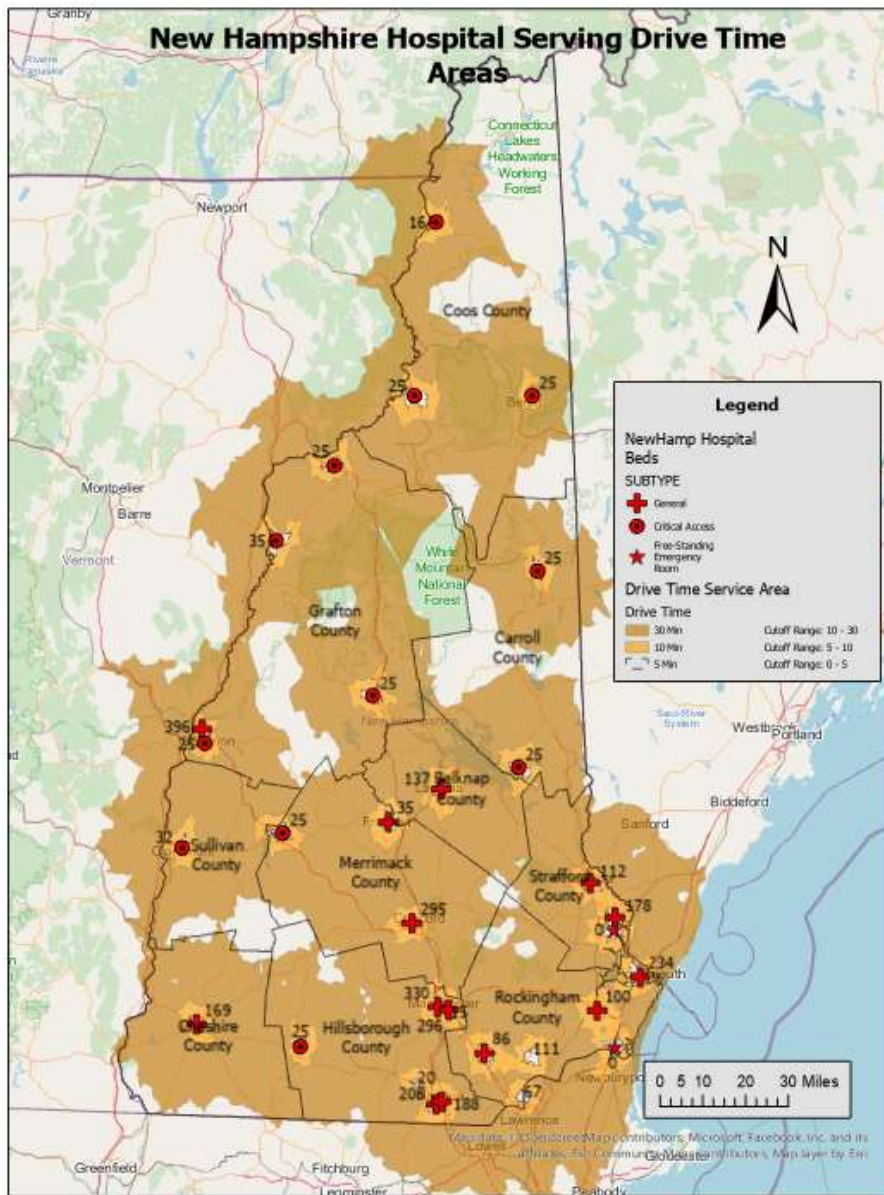
Viewing the various Facility location service area maps, one can see the gaps in Facility accessibility areas. The demand for the additional 6300 beds by 2030 with expansion of existing facilities alone will not provide the service areas needed to continue the Community Care concept therefore additional more localized Facility locations are needed.

In selecting these areas/communities for the new facilities several location preferences were incorporated.

- The commuting times ideally should not exceed 30 Minutes one way between LTC facilities and Hospitals/ medical facilities.
- Facilities on or near a major highway.
- Facilities near a population center (city, town) for services (fire, police, ambulance, medical attention) and availability of facility staff personnel and housing.
- Facilities near or in significant 65+ population census block groups.
- Facilities be located to provide the existing major population/facility centers an alternative location for future bed/personnel demand overflow.

Utilizing GIS (Geographic Information System) mapping software, the following pages show the melding of these location preferences resulting in the suggested area for the various new Facilities.

In many cases the new community location for a Facility is also a demand location for another additional facility and service types. This presents an opportunity to provide a multi-level service facility community complex.



Hospital Serving Areas

This map indicates the various Hospital in NH and the number of beds in each facility.

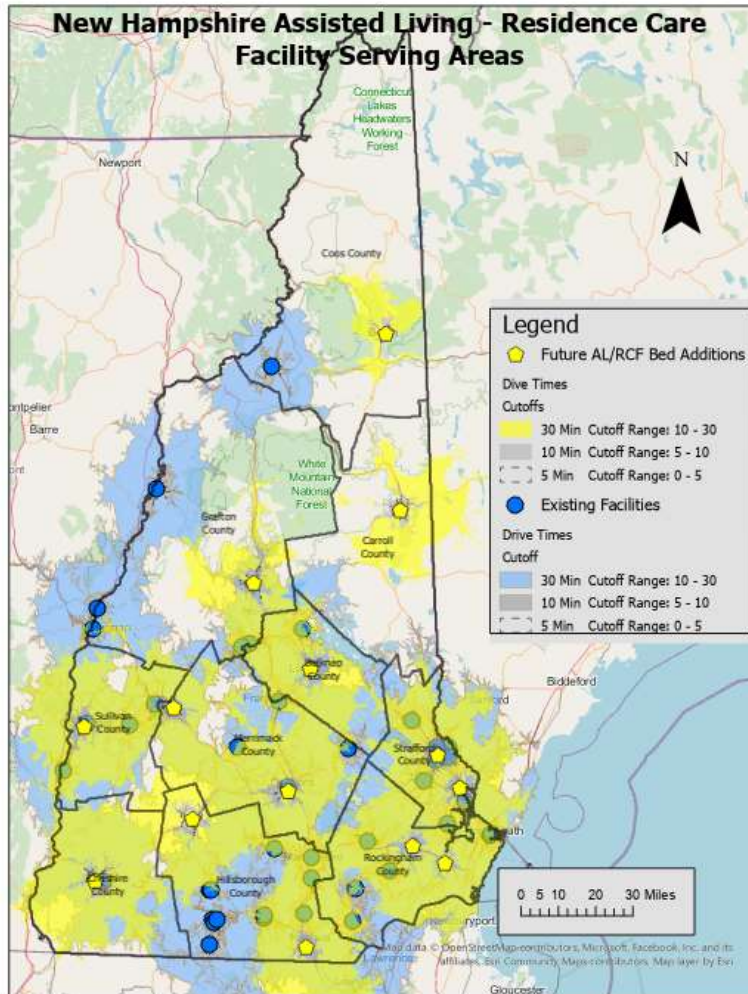
Highlighted are GIS created 30-minute drive time serving areas for each of these Hospitals. We can therefore see areas that would be ideal to have a Long-Term Health Care facility located under this criterion.

Map 8: NH Hospitals - Serving Areas and Bed Counts



New Hampshire, Long-Term Health Care Facilities, Locational Demand Analysis

Future Assisted Living Residences AL/RCF Location Areas



Map 9: Existing and Future AL/RCF Bed Locations

Meeting the need for an additional 726 AL/RCF Beds consist of expanding beds in the area around existing facilities and adding new facilities in areas that are within a desirable travel area to hospitals, have 65+ demographic demand, and near major highways. This process offers LTC availability to all AL/RCF Residence while keeping them within their own community area. There are 49 Existing AL/RCF Facilities in 9 Counties. (In Blue) There is no AL/RCF in Carroll County

Using GIS, existing and new locations service areas were generated. This map indicates the existing AL/RCF facilities, and their serving areas.

Also shown are 14 additional facilities in 10 Counties considered most desirable to meet the demographic demand for future AL/RCF Beds in the State. (In Yellow)

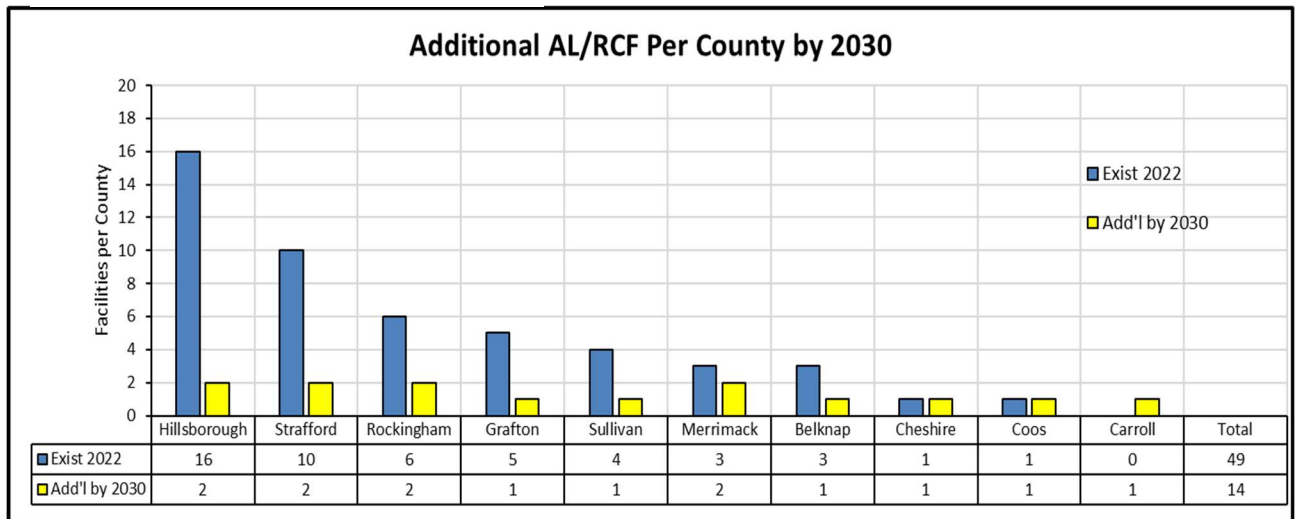
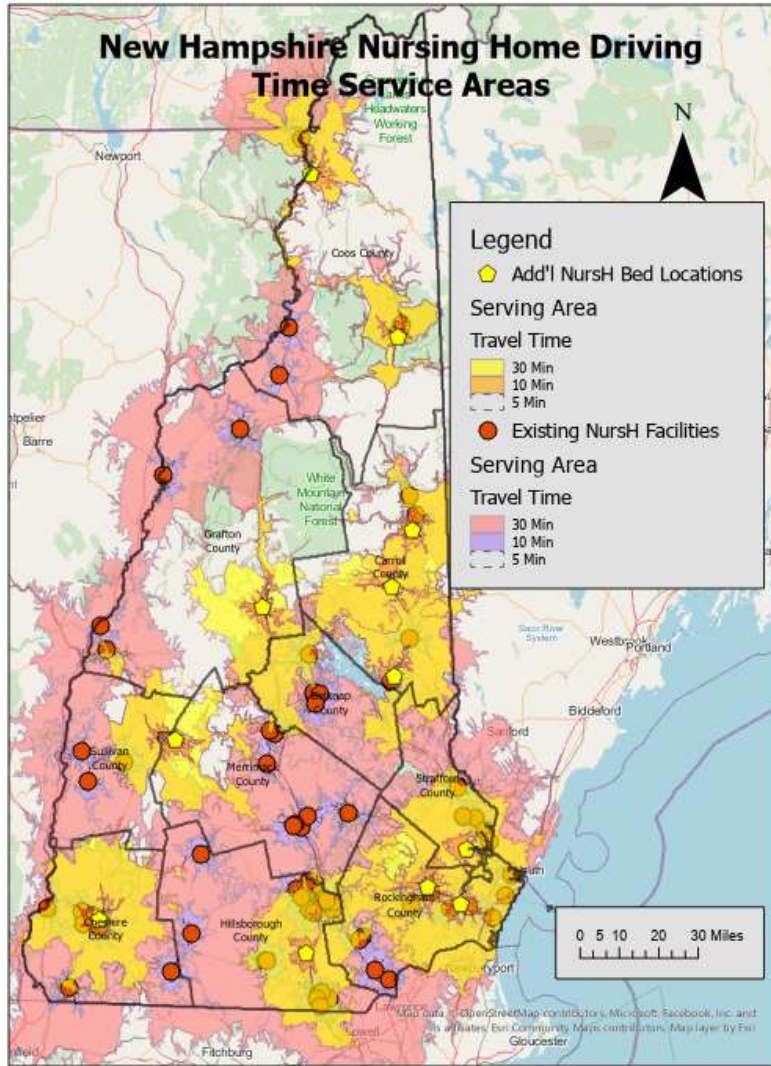


Chart 25: 2022-2030 Additional AL/RCF Facilities by County



New Hampshire, Long-Term Health Care Facilities, Locational Demand Analysis

Future Nursing Home-NursH - Location Areas



Map 10 Existing and Future NursH Bed Locations

Meeting the need for an additional 3228 NursH Beds consist of expanding beds in the area around existing facilities and adding new facilities in areas that are within a desirable travel area to hospitals, have 65+ demographic demand, and near major highways. This process offers NursH availability to all Residentials while providing travel within their own community area.

This map indicates the 79 existing Nursing Home facilities located in 10 Counties and their serving areas in pink.

Also Shown are 12 new NursH communities In Yellow throughout the State’s 10 Counties considered most desirable to meet the future NursH demographic demand.

Below is a chart indicating the number of suggested new facility serving areas by County.

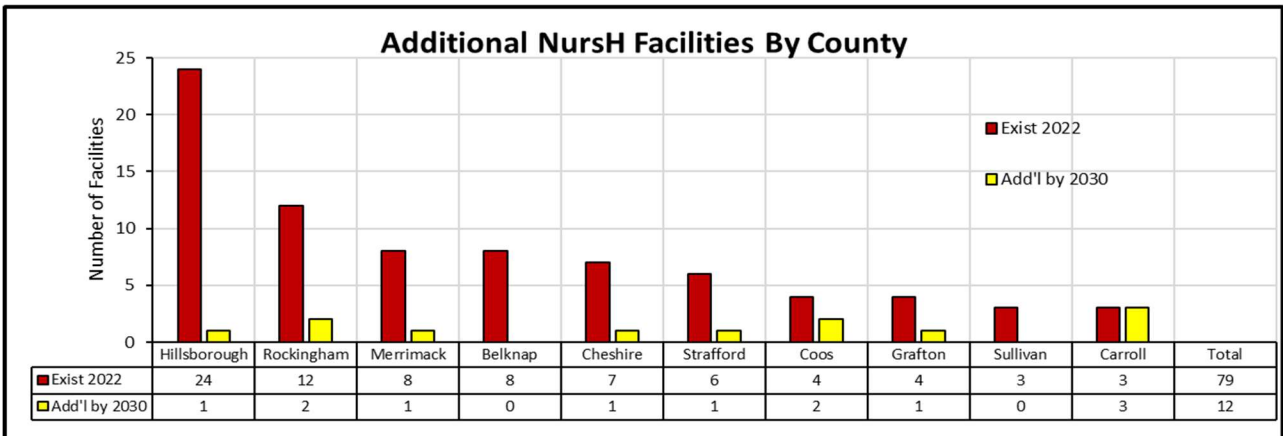
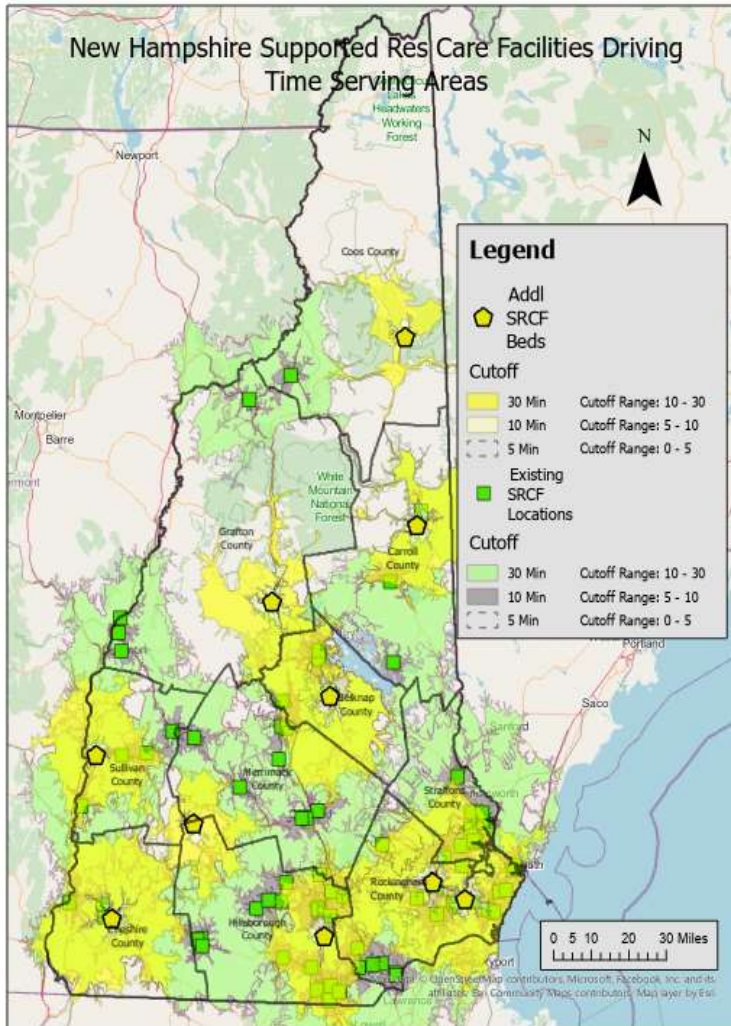


Chart 26: Added NursH Facilities by County 2022-2030



New Hampshire, Long-Term Health Care Facilities, Locational Demand Analysis

Future Supported Residential Care Facility -SRCF Location Areas



Map 11: Existing and Future SRCF Bed Locations

Meeting the need for an additional 2343 Beds consist of expanding beds in the area around existing facilities and adding new facilities in areas that are within a desirable travel area to hospitals, have 65+ demographic demand, and near major highways. This process offers LTC availability to all Residentials while keeping them within their own community area.

This map indicates the 89 Existing SRCF Facilities in 10 Counties (in green). Using GIS, existing and new SRCF locations and their service areas were generated.

Also shown are the general locations deemed best for 10 future SRCF Facilities in (In yellow) and their 30 min. drive time serving areas.

There are 10 new SRCF facilities locations in 8 Counties. These new areas are considered most desirable to meet the demographic demand for facilities in the State for SRCF services.

Below is a chart indicating the number of suggested new facility serving areas by County.

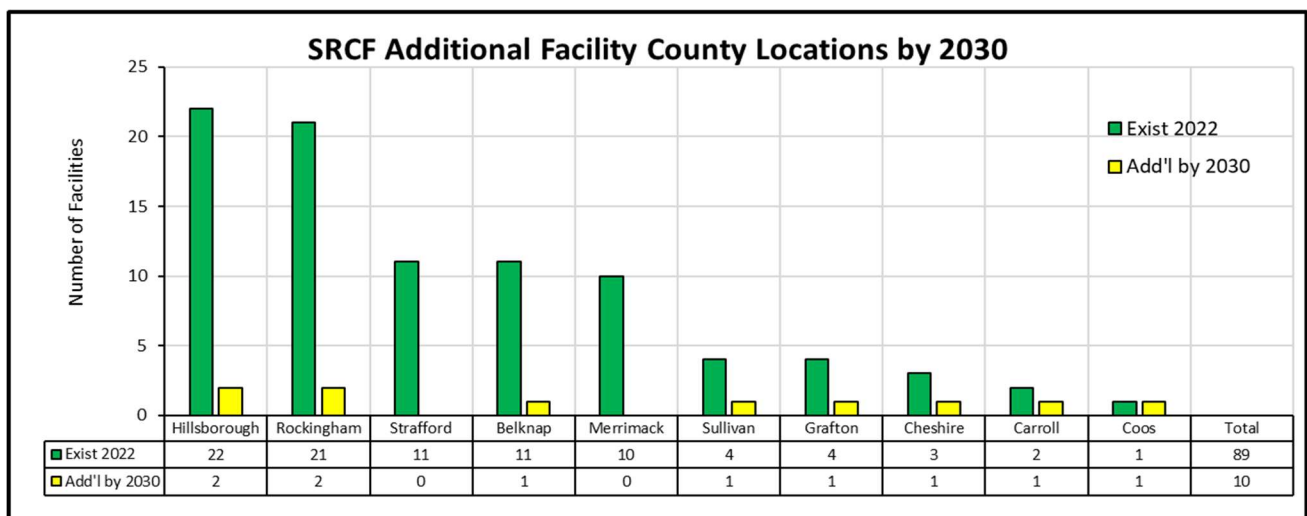


Chart 27: 2022-2030 Added SRCF Facilities by County



New Hampshire, Long-Term Health Care Facilities, Locational Demand Analysis

New Facility Community Locations 2023-2030

Below is a list of the suggested new locations for LTC Facilities These new locations combined with additional beds within the existing facility communities are needed to meet the Locational and bed needs of the 65+ population during the 2023-to-2030-time frame.

New Facility Locations (2023-2030)

County	Community Area	AL/RCF	SRCF	NURSH	Community Facility Total	Combined Facility
Belknap	Laconia	X	X	X	3	X
Coos	Berlin	X	X	X	3	X
Coos	Colebrook			X	1	
Carroll	Conway	X	X	X	3	X
Carroll	West Ossipee			X	1	
Carroll	Wolfeboro			X	1	
Cheshire	Keene	X	X	X	3	X
Grafton	Plymouth	X	X	X	3	X
Hillsborough	Nashua	X			1	
Hillsborough	Merrimack		X	X	2	X
Hillsborough	Hillsborough	X	X		2	X
Merrimack	Concord	X			1	
Merrimack	New London	X		X	2	X
Rockingham	Epping	X	X	X	3	X
Rockingham	Exeter	X	X	X	3	X
Stafford	Rochester	X			1	
Stafford	Dover	X			1	
Stafford	Durham			X	1	
Sullivan	Claremont	X	X		2	X
10	19	14	10	13	37	11

Table 1: New Facility Location list



Facility Capital Cost

The capital required to build the additional building space for the 6300+- Beds with associated equipment can vary between \$2.3 Billion and \$3.8 Billion. Several costs from a 2017 Canadian report (Gibbard, 2017)³ was collected then converted to US dollars at a 1.35 (2017) exchange rate. The Chart below indicates the Total 8-year cost to build and equip the building space for the 6300 added beds 2023-2030. Indicated are the possible cost levels from the study using the median cost of \$239K/Bed, the average cost at \$283K/Bed and the high- cost of \$397K/Bed, adjusted at an annual 4.4%⁴ construction inflation rate.

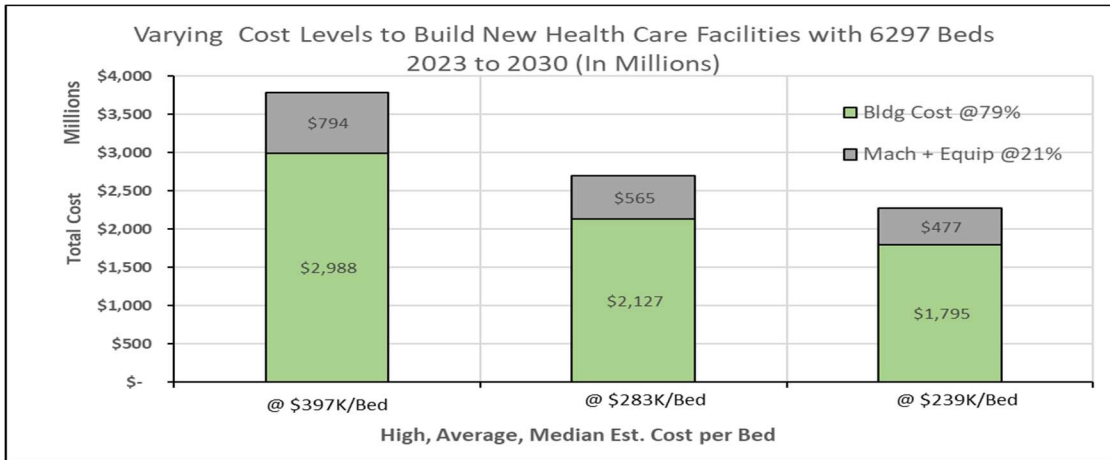


Chart 28: Various Cost per Bed to Build New LTC Facilities

The Chart below, Bar Charts left axis represent the Median \$239k/Bed cost and spreads the New Beds construction evenly over the 8-year 2023-2030 construction period. The 2022 \$K/Bed dollars were increased by a 4.4% annual inflation factor to reflect building cost increases during the 8-year 2023-2030 span. The right line axis represents a total accumulated cost of \$2.3B over the 8-year period.

The raising of this amount of capital by the Public and Private, For Profit and Not for Profit Facility

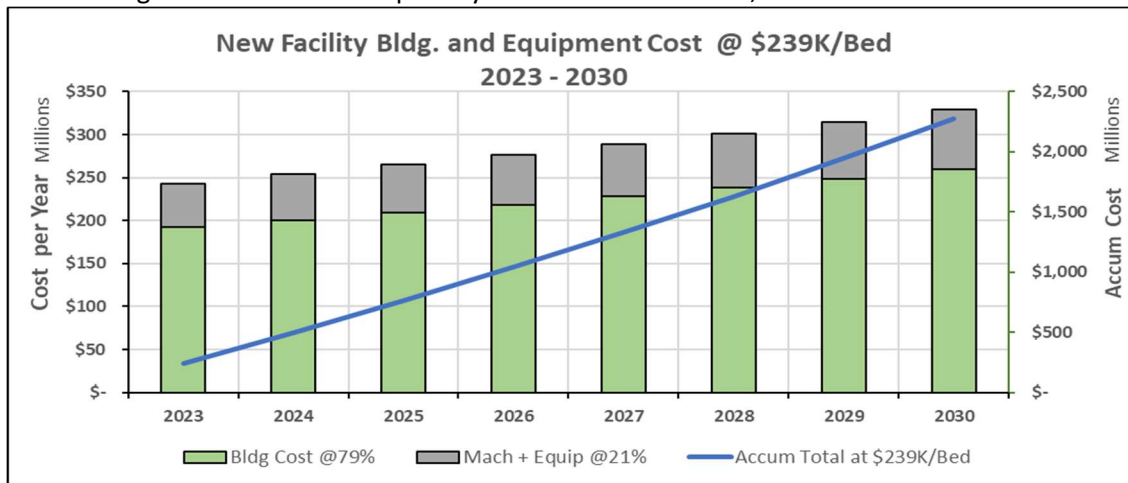


Chart 29: New LTC Total Facility Construction Cost 2022-2030

owners will be a challenge. Coordination on a Federal and State level between Public Officials, Finance Firms and the Facility Owners could facilitate such funding.

3 Conference Board of Canada 2017

4 Construction Analytics – Construction Inflation 2022 Update 5-3-22



New Hampshire, Long-Term Health Care Facilities, Locational Demand Analysis

Facility Operating Cost

The Additional Operating Cost (In Millions) for the forecasted 6300 additional beds is indicated in the graph below. Current and historical operating expense data on a Cost per bed basis from several existing Long-Term Facilities was used and projected for the years 2023 to 2030 at a 3% inflation rate. The total Add'l Beds were divided evenly over the 8-year forecast period.

The Yearly Operating expense is expected to go from approx. \$33 Million in 2023 to near \$300 Million in 2030. Total Accumulated Expenses are expected to be around \$1.3 Billion over the 8-year period.

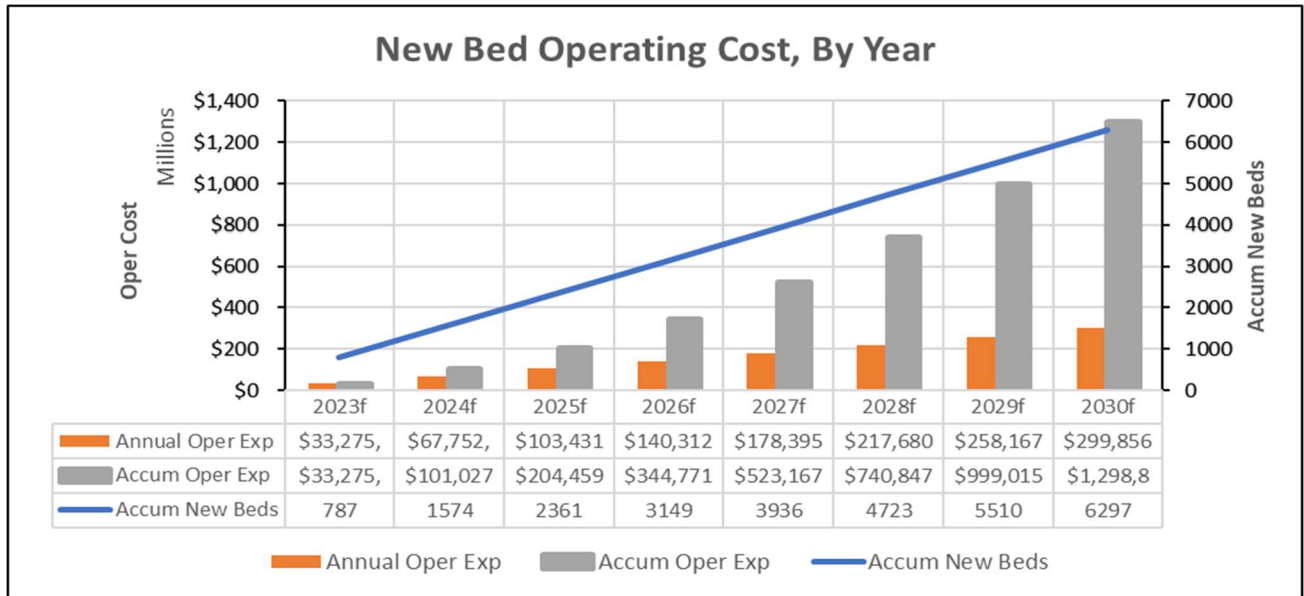


Chart 30: New LTC Facility Operating Cost 2022-2030



Facility Personnel

Personnel are an essential element in the success of Long-Term Care Facilities. At the present time, it is a challenge to secure talented and certified nursing and management personnel, especially in this extremely competitive and limited marketplace. Personnel costs are the major component of LTC Operating Cost. Personnel mainly consist of Nursing, and Administrative (Admin, Dining, Maintenance).

Axios (May 24, 2022): The Biden administration ramped up the urgency around America's health care workforce on Monday, releasing new recommendations for addressing burnout and other factors contributing to shortages.

"If we fail to act to address health worker burnout, we will place our nation's health at increasing risk," U.S. Surgeon General Vivek Murthy said during prepared remarks on Monday.

With the addition of some 6300 new beds, the additional personnel requirements are significant. Below is a chart indicating the projected personnel required for the add'l forecasted beds in NH. These future numbers were developed using data from several existing Long-Term Facilities in VT.

The forecast indicates a total of 4570 additional personnel will be required by 2030, consisting of about 2050 Administrative staff, and 2520 Nursing staff (RNs, LPNs, LNA, NA, CNA, Med Tech, etc.). These numbers will be affected by any future Federal or State requirements. In some cases, these positions are not 40 hr. per week positions.

Chart Below distributes the 6300 additional beds spread evenly over the 8 years of 2023 through 2030.

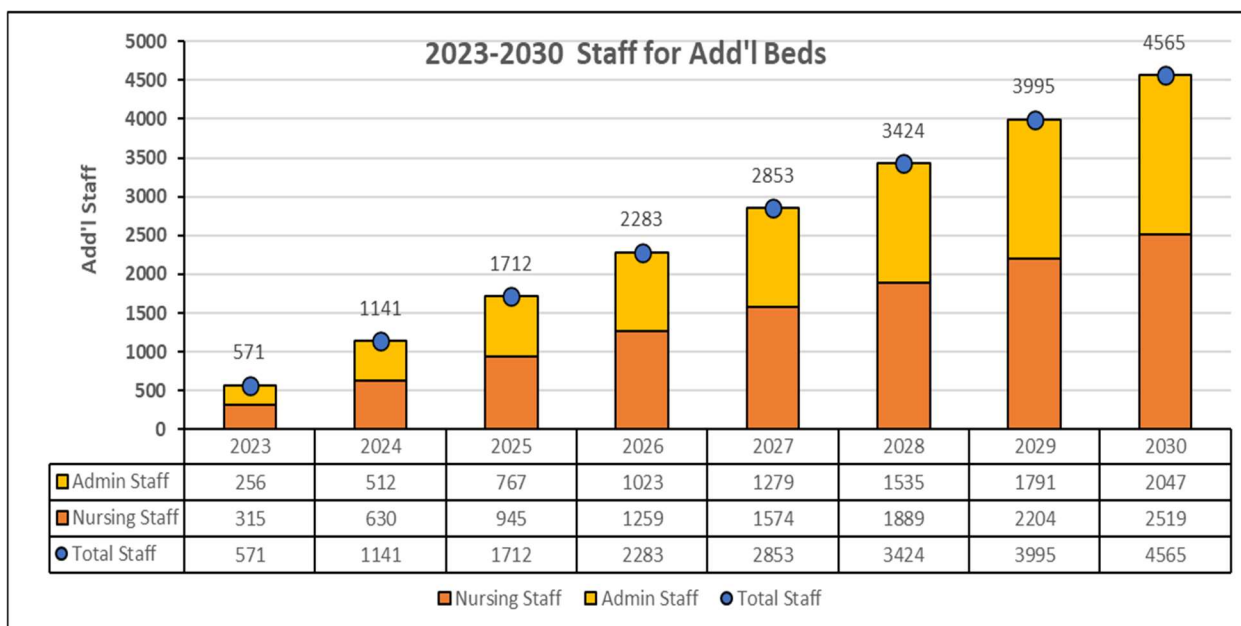


Chart 31: New LTC Facility Personnel Requirements 2022-2030



- “55% of primary care physicians caring for people living with Alzheimer’s report⁵ there are not enough dementia care specialists in their communities to meet patient demands.”
- New Hampshire is the 12th highest State for % Increase in Alzheimer-Dementia in the USA 2020-2025 at 23.3% Increase.

Potential actions to attract and keep LTC Personnel include:

Offer Student tuition reimbursement with an associated reciprocal guaranteed work time in the State. i.e., Four-year, two-year, certificate/ license, on the job type programs.

Consider a Partial Salary Tax exemption, i.e., no income tax on the first \$50K of Salary.

Relocation expense reimbursement for moving to NH or within NH.

Provide the Living Wage (as defined by the County specific MIT Living Wage Tables [Living Wage Calculator - Counties and Metropolitan Statistical Areas in New Hampshire \(mit.edu\)](#)) as their minimum wage.

Ensure State/ regional educational facilities/programs are available to meet the increased need for trained Long-Term Health Care Personnel.

Provide workforce housing – Build WFH close to the LTC facility, either directly or with Developers or State agencies. This is especially important in small towns where housing is not available or in larger cities where housing cost is high.

5-Alzheimer’s Assoc 2022 Alzheimer’s Disease Facts and Figures Special Report

[alzheimers-facts-and-figures.pdf](#)



Facility Inventory:

To Analyze and Locational Forecast by Facility Type and Service type a database needs to be established and maintained monthly. This database could reside with the NH Department of Disabilities, Aging, and Independent Living -DAIL. This database should include such information as Facility, Address, Number of Beds by Service Type, Number of beds in use by service type, Residence counts by age, sex, prior facility types and address, and last home Residential city/town.

This data combined with Census data will provide the State with an excellent basis for providing demand forecast by Type, Service, and location. It will also highlight when demand from a particular area could warrant a new Facility in that area.

Online Geographic Facility Information Database:

The moving from one's home to a Care Facility is one of the most traumatic experiences for the person and their loved ones. Keeping Residences close to their existing community is essential to their well-being and that of their spouses, siblings, relatives, and friends. Knowing where to send someone is one of the paramount endeavors in the Hierarchy of long-term health care.

This Data system will assist: The Public when looking for Facility type, location, and availability, Hospitals, Doctors, and Social Agencies who are also looking to place people to the various levels of Long-Term Care facilities.

The database should be updated regularly when beds become available.

Additionally, this web page would be most effective if placed as a main selection on the States home page.

(2022) New Hampshire LTC Facility Inventory List:

The following Attachments is LTC data secured from the State of New Hampshire web site.

These attachments indicate the Facilities by Type NursH, SRCF, and AL/RCF, and were used as a basis for Geocoding their locations, calculations and forecast in this report.



New Hampshire, Long-Term Health Care Facilities, Locational Demand Analysis

Attachment 1 LTC Inventory List 2022

Town Inventory and Future Bed Additions

Fac Type	AL-RCF	AL-RCF	AL-RCF	AL-RCF	NursH	NursH	NursH	NursH	SRCF	SRCF	SRCF	SRCF	All	All	All	All	All	All
County	Num of Exist Fac	Sum of Exist Beds	Num New Fac	Num add Beds	Num of Exist Fac	Sum of Exist Beds	Num New Fac	Num Add Beds	Num of Exist Fac	Sum of Exist Beds	Num New Fac	Num Add Beds	Total Num of Exist Fac	Total Sum of Exist Beds	Tot of New Fac	Tot of New Beds	2030 Tot Fac	2030 Tot Beds
Belknap	3	93	1	23	8	807	1	199	10	454	1	125	21	1354	3	347	24	1701
BEDFORD									1	89			1	89	0	0	1	89
DOVER					1	215			1	126			2	341	0	0	2	341
Laconia			1	23	4	314	1	199	2	93	1	125	6	407	3	347	9	754
LANCASTER					1	86							1	86	0	0	1	86
MEREDITH	1	44			1	105			4	124			6	273	0	0	6	273
MILFORD	1	14											1	14	0	0	1	14
North Conway					1	87							1	87	0	0	1	87
NORTHFIELD	1	35											1	35	0	0	1	35
SANBORNTON									1	7			1	7	0	0	1	7
WEST OSSIPEE									1	15			1	15	0	0	1	15
Carroll	0	0	1	42	3	252	3	246	2	41	2	314	5	293	6	602	11	895
North Conway			1	42	1	45	1	150	1	16	2	314	2	61	4	506	6	567
OSSIPEE					1	103	1	50					1	103	1	50	2	153
WOLFEBORO					1	104	1	46	1	25			2	129	1	46	3	175
Cheshire	1	144	1	33	7	541	1	123	3	257	1	139	11	942	3	295	14	1237
JAFFREY					1	83							1	83	0	0	1	83
KEENE	1	144	1	33	4	236	1	123	2	217	1	139	7	597	3	295	10	892
WESTMORELAND					1	150			1	40			2	190	0	0	2	190
WINCHESTER					1	72							1	72	0	0	1	72
Coos	1	24	1	17	4	334	1	42	2	62	2	112	6	420	4	171	10	591
BERLIN			1	17	2	180	0	21	1		1	62	2	180	2	100	4	280
Colebrook							1	21			1	50	0	0	2	71	2	71
WEST STEWARTS TOWN					1	97							1	97	0	0	1	97
WHITEFIELD	1	24			1	57			1	62			3	143	0	0	3	143
Crafton	5	59	1	60	4	417	1	283	4	408	1	103	13	884	3	446	16	1330
BRISTOL	2	28											2	28	0	0	2	28
Franconia					1	72							1	72	0	0	1	72
HANOVER	1	8			1	100			2	194			4	302	0	0	4	302
HAVERHILL	1	11											1	11	0	0	1	11
LEBANON					1	110			1	154			2	264	0	0	2	264
LITTLE TON									1	60			1	60	0	0	1	60
NORTH HAVERHILL					1	135							1	135	0	0	1	135
Plymouth			1	60			1	283			1	103	0	0	3	446	3	446
WEST LEBANON	1	12											1	12	0	0	1	12
Hillsborough	16	401	2	104	24	2299	2	596	23	1305	2	510	63	4005	6	1210	69	5215
BEDFORD	1	100			3	397			3	310			7	807	0	0	7	807
GOFFSTOWN	1	16			2	335			1	15			4	366	0	0	4	366
GREENFIELD	3	15											3	15	0	0	3	15
HILLSBORO			1	52	1	33					1	260	1	33	2	312	3	345
HUDSON					1	101			2	92			3	193	0	0	3	193
MANCHESTER	2	41			10	752			3	161			15	954	0	0	15	954
Merrimack	1	28					2	596			1	250	1	28	3	846	4	874
MILFORD	1	150			2	134			1	44			4	328	0	0	4	328
NASHUA			1	52	4	448			6	357			10	805	1	52	11	857
NEW BOSTON									3	43			3	43	0	0	3	43
NEW IPSWICH	1	22											1	22	0	0	1	22
PETERBOROUGH					1	99			4	283			5	382	0	0	5	382
TEMPLE	6	29											6	29	0	0	6	29



New Hampshire, Long-Term Health Care Facilities, Locational Demand Analysis

Town Inventory and Future Bed Additions

Fac Type	AL-RCF	AL-RCF	AL-RCF	AL-RCF	NursH	NursH	NursH	NursH	SRCF	SRCF	SRCF	SRCF	All	All	All	All	All	All
County	Num of Exist Fac	Sum of Exist Beds	Num New Fac	Num addl Beds	Num of Exist Fac	Sum of Exist Beds	Num New Fac	Num Addl Beds	Num of Exist Fac	Sum of Exist Beds	Num New Fac	Num Addl Beds	Total Num of Exist Fac	Total Sum of Exist Beds	Tot of New Fac	Tot of New Beds	2030 Tot Fac	2030 Tot Beds
Merrimack	3	77	2	105	8	956	1	272	10	522	2	244	21	1555	5	621	26	2176
Boscawen					1	290			1	29			2	319	0	0	2	319
CONCORD	1	52	1	45	4	459			5	237	1	122	10	748	2	167	12	915
EPSOM					1	108							1	108	0	0	1	108
Franklin					2	99			2	136			4	235	0	0	4	235
NEW LONDON			1	60			1	272	1	50	1	122	1	50	3	454	4	504
PITTSFIELD	1	10											1	10	0	0	1	10
WARNER									1	70			1	70	0	0	1	70
WEBSTER	1	15											1	15	0	0	1	15
Rockingham	6	116	2	252	12	1132	4	1040	21	1617	2	482	39	2865	8	1774	47	4639
BRENTWOOD					1	226			1	49			2	275	0	0	2	275
DEERFIELD									1	32			1	32	0	0	1	32
DERRY	1	16			2	174			3	190			6	190	0	0	3	190
EXETER			1	126	2	104	2	520	4	298	1	241	3	402	4	887	10	1289
Epping			1	126			2	520			1	241	0	0	4	887	4	887
FREMONT					1	50			1	36			2	86	0	0	2	86
HAMPTON					1	117			2	292			3	409	0	0	3	409
KINGSTON									1	112			1	112	0	0	1	112
LONDONDERRY									1	112			1	112	0	0	1	112
NEWMARKET									1	81			1	81	0	0	1	81
PORTSMOUTH	2	28			2	258			2	131			6	417	0	0	6	417
RAYMOND	1	12											1	12	0	0	1	12
RYE					1	61			2	154			3	215	0	0	3	215
SALEM					1	110			2	182			3	292	0	0	3	292
SANDOWN	1	44											1	44	0	0	1	44
WINDHAM	1	16			1	32			3	138			5	186	0	0	5	186
Strafford	10	213	1	57	6	397	2	356	11	536	0	144	27	1146	3	557	30	1703
BARRINGTON	1	10											1	10	0	0	1	10
DOVER	1	52			4	210			5	255	0	72	10	517	0	72	10	589
DURHAM	1	24					2	356	3	200	0	72	4	224	2	428	6	652
FARMINGTON	1	16											1	16	0	0	1	16
GONIC	1	19											1	19	0	0	1	19
LEE									1	32			1	32	0	0	1	32
MADBURY									1	24			1	24	0	0	1	24
ROCHESTER	5	92	1	57	2	187			1	25			8	304	1	57	9	361
Sullivan	4	130	1	33	3	277	1	71	4	77	1	171	11	484	3	275	14	759
CHARLESTOWN	1	11							1	12			2	23	0	0	2	23
CLAREMONT	1	11	1	33	1	68					1	171	2	79	2	204	4	283
NEWPORT	1	83			1	53	1	71	2	34			4	170	1	71	5	241
SUNAPEE	1	25							1	31			2	56	0	0	2	56
UNITY					1	156							1	156	0	0	1	156
Grand Total	49	1257	13	726	79	7412	17	3228	89	5279	14	2344	217	13948	44	6298	261	20246



LTC Inventory List

Attachment 1 LTC Inventory List 2022

Nursing Home Inventory

TYPE	FACILITY	ADDRESS	CITY	STATE	ZIP	BEDS	COUNTY
Nursing Home	RIVERSIDE REST HOME	276 COUNTY FARM ROAD	DOVER	NH	03820	215	Belknap
Nursing Home	LACONIA REHABILITATION CENTER	175 BLUEBERRY LANE	LACONIA	NH	03246	120	Belknap
Nursing Home	GOLDEN VIEW HEALTH CARE CENTER	19 NH ROUTE 104	MEREDITH	NH	03253	105	Belknap
Nursing Home	BELKNAP COUNTY NURSING HOME	30 COUNTY DRIVE	LACONIA	NH	03246	94	Belknap
Nursing Home	MINERAL SPRINGS	1251 WHITE MOUNTAIN HIGHWAY	NORTH CONWAY	NH	03860	87	Belknap
Nursing Home	COUNTRY VILLAGE CENTER GENESIS HEALTHCARE	91 COUNTRY VILLAGE ROAD	LANCASTER	NH	03584	86	Belknap
Nursing Home	ST FRANCIS REHAB AND NURSING CENTER	406 COURT ST	LACONIA	NH	03246	51	Belknap
Nursing Home	LEDGEVIEW	21 LEDGES DRIVE	LACONIA	NH	03246	49	Belknap
Nursing Home	WOLFEBORO BAY CENTER	39 CLIPPER DRIVE	WOLFEBORO	NH	03894	104	Carroll
Nursing Home	MOUNTAIN VIEW COMMUNITY	93 WATER VILLAGE ROAD	OSSIPEE	NH	03864	103	Carroll
Nursing Home	MERRIMAN HOUSE (MEMORIAL ELDER HEALTH SERVICES)	3073 WHITE MOUNTAIN HIGHWAY	NORTH CONWAY	NH	03860	45	Carroll
Nursing Home	CHESHIRE COUNTY HOME	201 RIVER ROAD	WESTMOREL AND	NH	03467	150	Cheshire
Nursing Home	KEENE CENTER GENESIS HEALTHCARE	677 COURT STREET	KEENE	NH	03431	106	Cheshire
Nursing Home	ALPINE HEALTHCARE CENTER	298 MAIN ST	KEENE	NH	03431	85	Cheshire
Nursing Home	JAFFREY REHABILITATION AND NURSING CENTER	20 PLANTATION DR	JAFFREY	NH	03452	83	Cheshire
Nursing Home	APPLEWOOD CENTER	8 SNOW RD	WINCHESTER	NH	03470	72	Cheshire
Nursing Home	LANGDON PLACE OF KEENE	136A ARCH STREET	KEENE	NH	03431	25	Cheshire



LTC Inventory List

TYPE	FACILITY	ADDRESS	CITY	STATE	ZIP	BEDS	COUNTY
Nursing Home	COVENANT LIVING OF KEENE	100 WYMAN ROAD	Keene	NH	03431	20	Cheshire
Nursing Home	COOS COUNTY NURSING HOME (BERLIN)	364 CATES HILL ROAD	BERLIN	NH	03570	100	Coos
Nursing Home	COOS COUNTY NURSING HOSPITAL	136 COUNTY FARM ROAD	WEST STEWARTSTOWN	NH	03597	97	Coos
Nursing Home	ST VINCENT DE PAUL REHAB & NURSING CTR	29 PROVIDENCE AVENUE	BERLIN	NH	03570	80	Coos
Nursing Home	MORRISON NURSING HOME	6 TERRACE STREET	WHITEFIELD	NH	03598	57	Coos
Nursing Home	GRAFTON COUNTY NURSING HOME	3855 DARTMOUTH COLLEGE HIGHWAY	NORTH HAVERHILL	NH	03774	135	Grafton
Nursing Home	LEBANON CENTER GENESIS HEALTHCARE	24 OLD ETNA ROAD	LEBANON	NH	03766	110	Grafton
Nursing Home	HANOVER TERRACE HEALTH ANDREHABILITATION CENTER	49 LYME RD	HANOVER	NH	03755	100	Grafton
Nursing Home	LAFAYETTE CENTER	93 MAIN STREET	Franconia	NH	03580	72	Grafton
Nursing Home	HILLSBOROUGH COUNTY NURSING HOME	400 MAST ROAD	GOFFSTOWN	NH	03045	300	Hillsborough
Nursing Home	PREMIER REHAB AND HEALTHCARE	55 HARRIS RD	Nashua	NH	03062	290	Hillsborough
Nursing Home	RIDGEWOOD CENTER GENESIS HEALTHCARE	25 RIDGEWOOD ROAD	BEDFORD	NH	03110	148	Hillsborough
Nursing Home	BEDFORD HILLS CENTER	30 COLBY COURT	BEDFORD	NH	03110	147	Hillsborough
Nursing Home	VILLA CREST NURSING & RETIREMENT	1276 HANOVER STREET	MANCHESTER	NH	03104	126	Hillsborough
Nursing Home	HANOVER HILL HEALTH CARE CENTER	700 HANOVER STREET	MANCHESTER	NH	03104	124	Hillsborough
Nursing Home	MOUNT CARMEL REHAB AND NURSING CENTER	235 MYRTLE ST	MANCHESTER	NH	03104	120	Hillsborough
Nursing Home	MAPLE LEAF HEALTHCARE CENTER	198 PEARL STREET	MANCHESTER	NH	03104	114	Hillsborough
Nursing Home	BEDFORD NURSING AND REHAB CENTER	480 DONALD ST	BEDFORD	NH	03110	102	Hillsborough



LTC Inventory List

TYPE	FACILITY	ADDRESS	CITY	STATE	ZIP	BEDS	COUNTY
Nursing Home	FAIRVIEW NURSING HOME	203 LOWELL ROAD	HUDSON	NH	03051	101	Hillsborough
Nursing Home	PHEASANT WOOD CENTER	50 PHEASANT ROAD	PETERBOROUGH	NH	03458	99	Hillsborough
Nursing Home	COURVILLE AT NASHUA	22 HUNT ST	NASHUA	NH	03060	94	Hillsborough
Nursing Home	CRESTWOOD CENTER	40 CROSBY STREET	MILFORD	NH	03055	82	Hillsborough
Nursing Home	COURVILLE AT MANCHESTER (THE)	44 WEST WEBSTER STREET	MANCHESTER	NH	03104	76	Hillsborough
Nursing Home	HACKETT HILL CENTER	191 HACKETT HILL RD	MANCHESTER	NH	03102	70	Hillsborough
Nursing Home	THE ELMS CENTER	71 ELM STREET	MILFORD	NH	03055	52	Hillsborough
Nursing Home	ST TERESA REHAB AND NURSING CENTER	519 BRIDGE ST	MANCHESTER	NH	03104	51	Hillsborough
Nursing Home	HOLY CROSS HEALTH CENTER	357 ISLAND POND RD	MANCHESTER	NH	03109	40	Hillsborough
Nursing Home	HUNT COMMUNITY	10 ALLDS STREET	NASHUA	NH	03060	40	Hillsborough
Nursing Home	BEL-AIR NURSING & REHAB CENTER	29 CENTER ST	GOFFSTOWN	NH	03045	35	Hillsborough
Nursing Home	HILLSBORO HOUSE NURSING HOME	67 SCHOOL STREET	HILLSBORO	NH	03244	33	Hillsborough
Nursing Home	THE HUNTINGTON AT NASHUA	55 KENT LANE	NASHUA	NH	03062	24	Hillsborough
Nursing Home	ST JOSEPH RESIDENCE	495 MAMMOTH ROAD	MANCHESTER	NH	03104	22	Hillsborough
Nursing Home	RIVERWOODS MANCHESTER	100 ALLIANCE WAY	MANCHESTER	NH	03102	9	Hillsborough
Nursing Home	MERRIMACK COUNTY NURSING HOME	325 DANIEL WEBSTER HIGHWAY	BOSCAWEN	NH	03303	290	Merrimack
Nursing Home	PLEASANT VIEW CENTER	239 PLEASANT ST	CONCORD	NH	03301	174	Merrimack
Nursing Home	HAVENWOOD HERITAGE HEIGHTS	33 CHRISTIAN AVENUE	CONCORD	NH	03301	115	Merrimack
Nursing Home	EPSOM HEALTHCARE CENTER	901 SUNCOOK VALLEY HIGHWAY	EPSOM	NH	03234	108	Merrimack
Nursing Home	MOUNTAIN RIDGE CENTER GENESIS HEALTHCARE	7 BALDWIN STREET	FRANKLIN	NH	03235	86	Merrimack



LTC Inventory List

TYPE	FACILITY	ADDRESS	CITY	STATE	ZIP	BEDS	COUNTY
Nursing Home	HARRIS HILL CENTER GENESIS HEALTHCARE	20 MAITLAND STREET	CONCORD	NH	03301	85	Merrimack
Nursing Home	PRESIDENTIAL OAKS	200 PLEASANT STREET	CONCORD	NH	03301	85	Merrimack
Nursing Home	PEABODY HOME	24 PEABODY PLACE	FRANKLIN	NH	03235	13	Merrimack
Nursing Home	ROCKINGHAM COUNTY NURSING HOME	117 NORTH ROAD	BRENTWOOD	NH	03833	226	Rockingham
Nursing Home	EDGEWOOD MANOR DBA EDGEWOOD CENTRE (THE)	928 SOUTH STREET	PORTSMOUT H	NH	03801	156	Rockingham
Nursing Home	OCEANSIDE SKILLED NURSING & REHABILITATION	22 TUCK ROAD	HAMPTON	NH	03842	117	Rockingham
Nursing Home	PLEASANT VALLEY NURSING CENTER	8 PEABODY RD	DERRY	NH	03038	112	Rockingham
Nursing Home	SALEM HAVEN NURSING HOME	23 GEREMONTY DRIVE	SALEM	NH	03079	110	Rockingham
Nursing Home	CEDAR HEALTHCARE CENTER	188 JONES AVE	PORTSMOUT H	NH	03801	102	Rockingham
Nursing Home	EXETER REHABILITATION CENTER	8 HAMPTON ROAD	EXETER	NH	03833	81	Rockingham
Nursing Home	DERRY REHABILITATION AND NURSING CENTER LLC	20 CHESTER ROAD	Derry	NH	03038	62	Rockingham
Nursing Home	WEBSTER AT RYE	795 WASHINGTON RD	RYE	NH	03870	61	Rockingham
Nursing Home	COLONIAL POPLIN NURSING HOME	442 MAIN ST	FREMONT	NH	03044	50	Rockingham
Nursing Home	WARDE HEALTH CENTER	21 SEARLES RD	WINDHAM	NH	03087	32	Rockingham
Nursing Home	THE RIDGE AT RIVERWOODS	6 WHITE OAK DRIVE	EXETER	NH	03833	23	Rockingham
Nursing Home	DOVER CENTER FOR HEALTH & REHABILITATION	307 PLAZA DRIVE	DOVER	NH	03820	112	Strafford
Nursing Home	ROCHESTER MANOR	40 WHITEHALL RD	ROCHESTER	NH	03867	108	Strafford
Nursing Home	BIRCH HEALTHCARE CENTER	62 ROCHESTER HILL RD	ROCHESTER	NH	03867	79	Strafford



LTC Inventory List

TYPE	FACILITY	ADDRESS	CITY	STATE	ZIP	BEDS	COUNTY
Nursing Home	ST ANN REHAB AND NURSING CENTER	195 DOVER POINT ROAD	DOVER	NH	03820	54	Strafford
Nursing Home	LANGDON PLACE OF DOVER, A SR LIVING COMM	60 MIDDLE ROAD	DOVER	NH	03820	30	Strafford
Nursing Home	RIVERSIDE REST HOME-HYDER HOSPICE UNIT	285 COUNTY FARM RD	DOVER	NH	03820	14	Strafford
Nursing Home	SULLIVAN COUNTY HEALTH CARE	5 NURSING HOME DRIVE	UNITY	NH	03743	156	Sullivan
Nursing Home	ELM WOOD CENTER AT CLAREMONT	290 HANOVER STREET	CLAREMONT	NH	03743	68	Sullivan
Nursing Home	WOODLAWN CARE CENTER	84 PINE STREET	NEWPORT	NH	03773	53	Sullivan



LTC Inventory List

Supported Residence Care Facility Inventory

TYPE	FACILITY	ADDRESS	CITY	STATE	ZIP	BEDS	COUNTY
SRCF	LANGDON PLACE OF DOVER, A SR LIVING COMM	60 MIDDLE ROAD	DOVER	NH	03820	126	Belknap
SRCF	THE ARBORS OF BEDFORD	70 HAWTHORNE DRIVE	BEDFORD	NH	03110	89	Belknap
SRCF	BRIDGES BY EPOCH AT NASHUA	575 AMHERST ST	NASHUA	NH	03063	54	Hillsborough
SRCF	TAYLOR HOME (THE)	435 UNION AVENUE	LACONIA	NH	03246	53	Belknap
SRCF	INN AT GOLDEN VIEW (THE)	19 NH ROUTE 104	MEREDITH	NH	03253	48	Belknap
SRCF	LEDGEVIEW	21 LEDGES DRIVE	LACONIA	NH	03246	40	Belknap
SRCF	FORESTVIEW MANOR 2	153 PARADE ROAD	MEREDITH	NH	03253	30	Belknap
SRCF	FORESTVIEW MANOR 1	153 PARADE ROAD	MEREDITH	NH	03253	26	Belknap
SRCF	FORESTVIEW MANOR 3	153 PARADE ROAD	MEREDITH	NH	03253	20	Belknap
SRCF	COMMUNITY LIVING FOR ELDERLY TAMWORTH	22 MAY'S WY	WEST OSSIPEE	NH	03890	15	Belknap
SRCF	PYAREO HOME	333 BROOK ROAD	SANBORNTON	NH	03269	7	Belknap
SRCF	ASSISTED LIVING@SUGARHILL	83 ROLLING WOOD DR	Wolfeboro	NH	03894	25	Carroll
SRCF	MINERAL SPRINGS	1251 WHITE MOUNTAIN HIGHWAY	NORTH CONWAY	NH	03860	16	Carroll
SRCF	LANGDON PLACE OF KEENE	136A ARCH STREET	KEENE	NH	03431	156	Cheshire
SRCF	COVENANT LIVING OF KEENE (ASSISTED LIVING AND MEMORY CARE)	100 WYMAN ROAD	Keene	NH	03431	61	Cheshire
SRCF	MAPLEWOOD ASSISTED LIVING	201 RIVER ROAD	WESTMORELAND	NH	03467	40	Cheshire
SRCF	SUMMIT BY MORRISON	56 SUMMIT DR	WHITEFIELD	NH	03598	62	Coos
SRCF	HARVEST HILL	23 ALICE PECK DAY DRIVE	LEBANON	NH	03766	154	Grafton
SRCF	KENDAL AT HANOVER	67 CUMMINGS RD	HANOVER	NH	03755	107	Grafton
SRCF	WHEELOCK TERRACE	32 BUCK ROAD	HANOVER	NH	03755	87	Grafton



LTC Inventory List

TYPE	FACILITY	ADDRESS	CITY	STATE	ZIP	BEDS	COUNTY
SRCF	RIVERGLEN HOUSE	55 RIVERGLEN LN	Littleton	NH	03561	60	Grafton
SRCF	BOWMAN PLACE OF OLDE BEDFORD	24 OLD BEDFORD RD	Bedford	NH	03110	150	Hillsborough
SRCF	BEDFORD FALLS	5 CORPORATE DRIVE	BEDFORD	NH	03110	114	Hillsborough
SRCF	LANGDON PLACE OF NASHUA, A SR LIVING COM	319 EAST DUNSTABLE ROAD	NASHUA	NH	03062	105	Hillsborough
SRCF	BENCHMARK SENIOR LIVING AT NASHUA CROSSINGS	674 WEST HOLLIS ST	Nashua	NH	03062	103	Hillsborough
SRCF	RIVERMEAD	150 RIVERMEAD ROAD	PETERBOROUGH	NH	03458	92	Hillsborough
SRCF	SCOTT-FARRAR AT PETERBOROUGH	11 ELM STREET	PETERBOROUGH	NH	03458	76	Hillsborough
SRCF	SUMMERHILL ASSISTED LIVING	183 OLD DUBLIN ROAD	PETERBOROUGH	NH	03458	75	Hillsborough
SRCF	RIVERWOODS MANCHESTER	100 ALLIANCE WAY	Manchester	NH	03102	70	Hillsborough
SRCF	EVERGREEN PLACE	813 BEECH STREET	MANCHESTER	NH	03104	52	Hillsborough
SRCF	LAUREL PLACE ASSISTED LIVING	203 LOWELL ROAD	HUDSON	NH	03051	47	Hillsborough
SRCF	CARLYLE PLACE	40 ROUTE 101	BEDFORD	NH	03110	46	Hillsborough
SRCF	AYNSLEY PLACE	80 LAKE STREET	NASHUA	NH	03060	46	Hillsborough
SRCF	THE INN AT FAIRVIEW	203 LOWELL RD	HUDSON	NH	03051	45	Hillsborough
SRCF	LEDGEWOOD BAY ASSISTED LIVING AND MEMORY CARE	43 LEDGEWOOD DRIVE	MILFORD	NH	03055	44	Hillsborough
SRCF	VILLAGE AT RIVERMEAD	50 TIMBERPOND RD	PETERBOROUGH	NH	03458	40	Hillsborough
SRCF	VILLA CREST NURSING & RETIREMENT	1276 HANOVER STREET	MANCHESTER	NH	03104	39	Hillsborough
SRCF	HUNT COMMUNITY	10 ALLDS STREET	NASHUA	NH	03060	25	Hillsborough
SRCF	THE HUNTINGTON AT NASHUA	55 KENT LANE	NASHUA	NH	03062	24	Hillsborough
SRCF	ROSE MEADOW ACRES	539 OLD COACH RD	NEW BOSTON	NH	03070	16	Hillsborough
SRCF	ROSE MEADOW GARDEN	336 BEDFORD ROAD	NEW BOSTON	NH	03070	16	Hillsborough



LTC Inventory List

TYPE	FACILITY	ADDRESS	CITY	STATE	ZIP	BEDS	COUNTY
SRCF	INN AT PARKER STATION	46 PARKER STATION ROAD	GOFFSTOWN	NH	03045	15	Hillsborough
SRCF	ROSE MEADOW FARM	37 BRIAR HILL ROAD	NEW BOSTON	NH	03070	11	Hillsborough
SRCF	THE GOLDEN CREST	29 BALDWIN ST	FRANKLIN	NH	03235	100	Merrimack
SRCF	GRANITE LEDGES OF CONCORD	151 LANGLEY PARKWAY	CONCORD	NH	03301	90	Merrimack
SRCF	PINE ROCK MANOR	3 DENNY HILL ROAD	WARNER	NH	03278	70	Merrimack
SRCF	THE BIRCHES AT CONCORD	300 PLEASANT ST	CONCORD	NH	03301	60	Merrimack
SRCF	WOODCREST VILLAGE, LLC	356 MAIN STREET	NEW LONDON	NH	03257	50	Merrimack
SRCF	PEABODY HOME ASSISTED LIVING UNIT	24 PEABODY PLACE	FRANKLIN	NH	03235	36	Merrimack
SRCF	HAVENWOOD-HERITAGE HEIGHTS	33 CHRISTIAN AVENUE	CONCORD	NH	03301	34	Merrimack
SRCF	GERRISH MANOR	325 DANIEL WEBSTER HIGHWAY BLDG 2	BOSCAWEN	NH	03303	29	Merrimack
SRCF	HAVENWOOD HERITAGE HEIGHTS	33 CHRISTIAN AVENUE	CONCORD	NH	03301	29	Merrimack
SRCF	PRESIDENTIAL OAKS	200 PLEASANT STREET	CONCORD	NH	03301	24	Merrimack
SRCF	CORNERSTONE AT HAMPTON	298 EXETER ROAD	Hampton	NH	03842	212	Rockingham
SRCF	LANGDON PLACE OF EXETER, A SR LIVING COM	17 HAMPTON RD	EXETER	NH	03833	114	Rockingham
SRCF	ALL AMERICAN ASSISTED LIVING AT KINGSTON	193 MAIN ST	KINGSTON	NH	03848	112	Rockingham
SRCF	ALL AMERICAN ASSISTED LIVING AT LONDONDERRY	1 BUTTON DR	LONDONDERRY	NH	03053	112	Rockingham
SRCF	WENTWORTH SENIOR LIVING	346 PLEASANT ST	PORTSMOUTH	NH	03801	101	Rockingham
SRCF	THE RESIDENCE AT SALEM WOODS	6 SALLY SWEET'S WAY	SALEM	NH	03079	100	Rockingham
SRCF	WEBSTER AT RYE ASSISTED LIVING COMMUNITY	795 WASHINGTON ROAD	RYE	NH	03870	90	Rockingham
SRCF	GREYSTONE FARM AT SALEM	242 MAIN ST	SALEM	NH	03079	82	Rockingham



LTC Inventory List

TYPE	FACILITY	ADDRESS	CITY	STATE	ZIP	BEDS	COUNTY
SRCF	WINDHAM TERRACE	3 CHURCH ROAD	WINDHAM	NH	03087	82	Rockingham
SRCF	THE PINES OF NEWMARKET	9 GRANT ROAD	NEWMARKET	NH	03857	81	Rockingham
SRCF	PARTRIDGE HOUSE	777 LAFAYETTE ROAD	HAMPTON	NH	03842	80	Rockingham
SRCF	RIVERWOODS AT EXETER	7 RIVERWOODS DRIVE	EXETER	NH	03833	66	Rockingham
SRCF	THE BOULDERS AT RIVERWOODS	6 TIMBER LANE	EXETER	NH	03833	64	Rockingham
SRCF	BENCHMARK AT RYE	295 LAFAYETTE RD	RYE	NH	03870	64	Rockingham
SRCF	THE RIDGE AT RIVERWOODS	6 WHITE OAK DRIVE	EXETER	NH	03833	54	Rockingham
SRCF	ERNEST P. BARKA ASSISTED LIVING	117 NORTH ROAD	BRENTWOOD	NH	03833	49	Rockingham
SRCF	WARDE HEALTH CENTER SUPPORTED RESIDENTIAL CARE FACILITY	21 SEARLES RD	WINDHAM	NH	03087	39	Rockingham
SRCF	POPLIN WAY	442 MAIN STREET UNIT 2	FREMONT	NH	03044	36	Rockingham
SRCF	INN AT DEERFIELD INC. (THE)	34 RIDGE ROAD	DEERFIELD	NH	03037	32	Rockingham
SRCF	CEDAR HEALTHCARE CENTER	188 JONES AVE	PORTSMOUTH	NH	03801	30	Rockingham
SRCF	GRACE HOUSE OF WINDHAM	23 MAMMOTH RD	WINDHAM	NH	03087	17	Rockingham
SRCF	THE RESIDENCE AT SILVER SQUARE	100 STERLING WAY	DOVER	NH	03820	81	Strafford
SRCF	BROOKDALE SPRUCE WOOD	25 WORTHEN ROAD	DURHAM	NH	03824	80	Strafford
SRCF	SPRING VILLAGE AT DOVER	35 POINTE PL	DOVER	NH	03820	62	Strafford
SRCF	HARMONY HOMES BY THE BAY	40 BRIGGS WY	DURHAM	NH	03824	60	Strafford
SRCF	RIVERWOODS DURHAM	20 STONE QUARRY DR	Durham	NH	03824	60	Strafford
SRCF	WATSON FIELDS	201 WATSON RD	DOVER	NH	03820	54	Strafford
SRCF	WENTWORTH HOME FOR THE AGED	795 CENTRAL AVENUE	DOVER	NH	03820	42	Strafford
SRCF	KIRKWOOD CORNERS	206 NORTH RIVER RD	LEE	NH	03861	32	Strafford



LTC Inventory List

TYPE	FACILITY	ADDRESS	CITY	STATE	ZIP	BEDS	COUNTY
SRCF	STUDLEY HOME INC	34 EASTERN AVENUE	ROCHESTER	NH	03867	25	Strafford
SRCF	CARRIAGE HILL ASSISTED LIVING	306 KNOX MARSH RD	MADBURY	NH	03823	24	Strafford
SRCF	WADLEIGH HOUSE	10 SUMMER ST	DOVER	NH	03820	16	Strafford
SRCF	SUNAPEE COVE ASSISTED LIVING	1250 ROUTE 11	SUNAPEE	NH	03782	31	Sullivan
SRCF	SUMMERCREST ASSISTED LIVING, LLC	169 SUMMER STREET	NEWPORT	NH	03773	18	Sullivan
SRCF	MCCOY HOME FOR THE ELDERLY	1016 JOHN STARK HWY	NEWPORT	NH	03773	16	Sullivan
SRCF	PEACEFUL HARVEST HOMES LLC	144 PARIS AVE	CHARLESTOWN	NH	03603	12	Sullivan



LTC Inventory List

Assisted Living/Residence Care Facility Inventory

TYPE	FACILITY	ADDRESS	CITY	STATE	ZIP	BEDS	COUNTY
AL/RCF	THE INN AT MEREDITH BAY	21 UPPER MILE POINT DRIVE	MEREDITH	NH	03253	44	Belknap
AL/RCF	PILLSBURY HOME	95 HIGH ST	MILFORD	NH	03055	14	Belknap
AL/RCF	THE CARRIAGE HOUSE OF NORTHFIELD	9 SUMMER STREET	NORTHFIELD	NH	03276	35	Belknap
AL/RCF	AMERICAN HOUSE KEENE	197 WATER ST	KEENE	NH	03431	144	Cheshire
AL/RCF	SARTWELL PLACE	6 TERRACE STREET	WHITEFIELD	NH	03598	24	Coos
AL/RCF	MAE'S PLACE	212 SUMMER ST	BRISTOL	NH	03222	12	Grafton
AL/RCF	FOX MEADOW RETIREMENT HOME	1151 SUMMER STREET	BRISTOL	NH	03222	16	Grafton
AL/RCF	MERRY MEADOW FARM - HANOVER HOUSE	1 PROSPECT STREET	HANOVER	NH	03755	8	Grafton
AL/RCF	ON THE GREEN RESIDENTIAL CARE FACILITY	412 DARTMOUTH COLLEGE HIGHWAY	HVERHILL	NH	03765	11	Grafton
AL/RCF	WESTBORO HOUSE	11 ELM ST WEST	WEST LEBANON	NH	03784	12	Grafton
AL/RCF	BENTLEY COMMONS AT BEDFORD	66 HAWTHORNE DRIVE	BEDFORD	NH	03110	100	Hillsborough
AL/RCF	VILLAGER RETIREMENT HOME	50 N. MAST STREET	GOFFSTOWN	NH	03045	16	Hillsborough
AL/RCF	RED FARM HOUSE	24 WHITNEY ROAD	GREENFIELD	NH	03047	3	Hillsborough
AL/RCF	JOVIS HOUSE	12 WHITNEY DRIVE	GREENFIELD	NH	03047	6	Hillsborough
AL/RCF	ARTABAN HOUSE	40 PLOWSHARE LANE	GREENFIELD	NH	03047	6	Hillsborough
AL/RCF	WASHINGTON MANOR	67 PROSPECT STREET	MANCHESTER	NH	03104	16	Hillsborough
AL/RCF	MYRTLE MANOR II INC	83 MYRTLE STREET	MANCHESTER	NH	03104	25	Hillsborough
AL/RCF	ROSE HAVEN	8 JENNIFER DR	Merrimack	NH	03054	28	Hillsborough
AL/RCF	LEDGEWOOD BAY ASSISTED LIVING AND MEMORY CARE	43 LEDGEWOOD DRIVE	MILFORD	NH	03055	150	Hillsborough
AL/RCF	FRIENDSHIP MANOR	151 MAIN STREET	NEW IPSWICH	NH	03071	22	Hillsborough



LTC Inventory List

TYPE	FACILITY	ADDRESS	CITY	STATE	ZIP	BEDS	COUNTY
AL/RCF	TOBIAS HOUSE	75 BIRCH HILL ROAD	TEMPLE	NH	03084	6	Hillsborough
AL/RCF	LEDGEWOOD	62 LUKAS DRIVE	TEMPLE	NH	03084	5	Hillsborough
AL/RCF	FOUR WINDS COMMUNITY-ST ORAN HOUSE	32 COLBURN ROAD	TEMPLE	NH	03084	3	Hillsborough
AL/RCF	ECHO FARM	63 MEMORIAL HIGHWAY	TEMPLE	NH	03084	5	Hillsborough
AL/RCF	CROSSROAD FARM	37 MEMORIAL DRIVE	TEMPLE	NH	03084	5	Hillsborough
AL/RCF	BIRCH	61 LUKAS DRIVE	TEMPLE	NH	03084	5	Hillsborough
AL/RCF	PRESIDENTIAL OAKS	200 PLEASANT STREET	CONCORD	NH	03301	52	Merrimack
AL/RCF	VINTAGE HILL, LLC	10 BERRY AVENUE	PITTSFIELD	NH	03263	10	Merrimack
AL/RCF	AUSTIN HOME	532 WHITE PLAINS ROAD	WEBSTER	NH	03303	15	Merrimack
AL/RCF	BEAVER LAKE LODGE	38 NORTH SHORE ROAD	DERRY	NH	03038	16	Rockingham
AL/RCF	THE INN AT EDGEWOOD	936 SOUTH ST	PORTSMOUTH	NH	03801	16	Rockingham
AL/RCF	RESIDENTIAL FACILITY II	413 LAFAYETTE RD	PORTSMOUTH	NH	03801	12	Rockingham
AL/RCF	THE WELLSTONE HOUSE	125 LANGFORD ST	RAYMOND	NH	03077	12	Rockingham
AL/RCF	COLONIAL FOX DEN, LLC	208 NORTH ROAD	SANDOWN	NH	03873	44	Rockingham
AL/RCF	ASSISTED LIVING AT PINE HILL	35 NORTH LOWELL RD	WINDHAM	NH	03087	16	Rockingham
AL/RCF	POND VIEW ACRES	923 FRANKLIN PIERCE HWY	BARRINGTON	NH	03825	10	Strafford
AL/RCF	BELLAMY FIELDS	150 GARRISON ROAD	DOVER	NH	03820	52	Strafford
AL/RCF	HARMONY HOMES LLC	1 STAGECOACH RD	DURHAM	NH	03824	24	Strafford
AL/RCF	OUR PLACE INN TIME	31 TAPPAN STREET	FARMINGTON	NH	03835	16	Strafford
AL/RCF	ROSEWOOD MANOR ASSISTED LIVING RESIDENCE, LLC	2 CHURCH ST	GONIC	NH	03839	19	Strafford



LTC Inventory List

TYPE	FACILITY	ADDRESS	CITY	STATE	ZIP	BEDS	COUNTY
AL/RCF	STUDLEY HOME	34 EASTERN AVENUE	ROCHESTER	NH	03867	15	Strafford
AL/RCF	MEADOW VIEW MANOR	749 SALMON FALLS ROAD	ROCHESTER	NH	03868	5	Strafford
AL/RCF	LINCOLN TERRACE ASSISTED LIVING RESIDENCE LLC	11 LINCOLN ST	ROCHESTER	NH	03867	16	Strafford
AL/RCF	LILAC VIEW CORP	18 HEALTH CARE DRIVE	ROCHESTER	NH	03867	40	Strafford
AL/RCF	DESIREE'S PLACE	93 CHARLES STREET	ROCHESTER	NH	03867	16	Strafford
AL/RCF	WAYNE'S PLACE	164 OLD SPRINGFIELD RD	CHARLESTOWN	NH	03603	11	Sullivan
AL/RCF	SILVER MAPLES RESIDENTIAL CARE	5 WINTER STREET	CLAREMONT	NH	03743	11	Sullivan
AL/RCF	SUMMERCREST	169 SUMMER STREET	NEWPORT	NH	03773	83	Sullivan
AL/RCF	SUNAPEE COVE ASSISTED LIVING	1250 ROUTE 11	SUNAPEE	NH	03782	25	Sullivan



Table of Figures

Charts:

CHART 1: FACILITY DISTRIBUTION BY TYPE BY COUNTY..... 6

CHART 2: TOTAL BEDS BY FACILITY TYPE BY COUNTY 7

CHART 3: TOTAL BEDS PER 1000 POP 65+ 7

CHART 4: NURSING HOME FACILITY DISTRIBUTION BY COUNTY 8

CHART 5: NURSING HOME BEDS BY COUNTY 9

CHART 6:NURSING HOME BEDS PER 1000 POP BY COUNTY 9

CHART 7: NURSH FACILITY BED SIZE DISTRIBUTION 9

CHART 8:- AL/RCF FACILITIES PER COUNTY 10

CHART 9: AL/RCF BEDS BY COUNTY..... 11

CHART 10: AL/RCF FACILITY BED INVENTORY DISTRIBUTION 11

CHART 11: SRCF FACILITIES BY COUNTY..... 12

CHART 12: SRCF BEDS BY COUNTY 13

CHART 13: SRCF BEDS PER 1000 POP 65+ BY COUNTY 13

CHART 14: SRCF BED AND FACILITY DISTRIBUTION..... 13

CHART 15: STATE POPULATION COHORTS 2022 14

CHART 16: POPULATION GAIN 2010 TO 2030 15

CHART 17 : STATE 2022 AND 2030 POPULATION FCST 65+ 15

CHART 18: COUNTY 65+ AS A % OF THE TOTAL STATE POPULATION 16

CHART 19: 65+ AS A % OF THE COUNTY’S POPULATION 16

CHART 20: STATE 2022 AND 2030 POP FCST 65+ 19

CHART 21: 2022 BEDS PER 1000 POP 65+ 19

CHART 22: 2022 -2030 TOTAL ADD'L BEDS..... 20

CHART 23: 2030 TOTAL BEDS PER 1000 POP 65+ 21

CHART 24: 2030 TOTAL BEDS IN SERVICE..... 21

CHART 25: 2022-2030 ADDITIONAL AL/RCF FACILITIES BY COUNTY..... 24

CHART 26:ADDED NURSH FACILITIES BY COUNTY 2022-2030 25

CHART 27: 2022-2030 ADDED SRCF FACILITIES BY COUNTY 26

CHART 28: VARIOUS COST PER BED TO BUILD NEW LTC FACILITIES 28

CHART 29: *NEW LTC TOTAL FACILITY CONSTRUCTION COST 2022-2030* 28

CHART 30: NEW LTC FACILITY OPERATING COST 2022-2030 29

CHART 31: NEW LTC FACILITY PERSONNEL REQUIREMENTS 2022-2030 30

Tables:

TABLE 1: NEW FACILITY LOCATION LIST..... 27



Maps:

MAP 1: ALL NH LTHC FACILITY GEOGRAPHIC LOCATIONS 6

MAP 2: NURSING HOME GEOGRAPHIC LOCATIONS..... 8

MAP 3: NURSING HOME BED GEOGRAPHIC DISTRIBUTION 9

MAP 4: ASSISTED LIVING RES CARE FACILITY GEOGRAPHIC LOCATIONS..... 10

MAP 5: AL/RCF BED GEOGRAPHIC DISTRIBUTION 11

MAP 6: SRCF FACILITY GEOGRAPHIC LOCATIONS 12

MAP 7: SRCF FACILITY BED GEOGRAPHIC DISTRIBUTION..... 13

MAP 8: NH HOSPITALS - SERVING AREAS AND BED COUNTS 23

MAP 9: EXISTING AND FUTURE AL/RCF BED LOCATIONS..... 24

MAP 10 EXISTING AND FUTURE NURSH BED LOCATIONS 25

MAP 11:EXISTING AND FUTURE SRCF BED LOCATIONS 26



Bibliography, Distribution:

1-State of New Hampshire DHHS Health Facilities Administration Licensing, Facilities Licensed Under RSA 151 in NH, Dated 5/2/2022.

<https://www.dhhs.nh.gov/sites/g/files/ehbem476/files/documents2/licensedfacilities.pdf>

2-ESRI ArcGIS. Environmental Systems Research Institute, Geographic Information Systems, Redlands California. <https://www.esri.com/en-us/arcgis/about-arcgis/overview>

3-Gibbard, R. (2017). Sizing Up the Challenge: Meeting the Demand for Long-Term Care in Canada. The Conference Board of Canada.

[Sizing Up the Challenge: Meeting the Demand for Long-Term Care in Canada - The Conference Board of Canada](#)

4-Construction Analytics. Construction Inflation 2022 –.

[Construction Inflation 2022 « Construction Analytics \(edzarenski.com\)](#)

5-Alzheimer’s Association. Alzheimer’s Disease Facts and Figures Special Report 2022.

<https://www.alz.org/alzheimers-dementia/facts-figures>

6-New Hampshire Commission on Aging, Annual report, November 2023

[COA_2023_ANNUAL_REPORT_Executive_Summary.pdf \(nh.gov\)](#)

7 Housing America’s Older Adults 2023 – Harvard Joint Center for Housing Studies, November 30, 2023

[Housing America’s Older Adults 2023 | Joint Center for Housing Studies \(harvard.edu\)](#)

Publication:

Issue 1, January 4, 2024 – Original Analysis

Issue 1a, January 25, 2024 – Added Town Inventory Table.

Distribution:

CC:

US NH Senator Jeanne Shaheen
US NH Senator Margaret Wood Hassan
US NH Representative Chris Pappas
US NH Representative Ann McLane Kuster
NH Governor Chris Sununu
The US Senate Special Committee on Aging
NH Executive Council
NH Senate Committee on Capital Budget
NH Senate Committee on Health and Human Services
NH House Committee on Health, Human Services and Elderly Affairs
NH House Committee on Ways and Means
NH State Commission on Aging

NH DHHS Commissioner Lori Weaver
NH Director of Long-Term Support and Services - Melisa Hardy
NH Director Division of Medicaid Services Henery Lipman
Dr. Donald Birx, PhD. NH Higher Education Commission
NH Health Care Assoc./ NH AARP
NH Alliance for Healthy Living
NH College and University Council
NH Home Care, Hospice and Palliative Care
Alzheimer’s Assoc. of NH/MA

Previous Publications:

Vermont – LTHC Facilities, Location Demand Analysis, June 2022



New Hampshire LTC **Demand Analysis**

Kieslich Analytics is a Research and Analytical group that assists public officials, legislators, and private or public organizations to address many of our nations and global humanitarian challenges such as Elder Health Care and Living Wages.

Its founder, Allen Kieslich, has over 50 years of Research, data analysis and forecasting experience starting with his position in Corporate Planning at New England Tel/Verizon, has taught at several international market analysis - forecasting conferences, and has presented to many domestic and foreign telecom companies on market demand analysis and forecasting processes utilizing advance IT systems and software such as Big Data and GIS.

After his Civil Eng. AAS at VTC Allen expanded his knowledge with a BS in IT at Northeastern University, and continued education in Finance, Urban Planning, and Project Mgmt. at Boston University, Harvard, and MIT. He has lived in FL, MA, NH, and VT.

Allen volunteers at charities in Vermont and Florida, is an avid sailor and pickle ball player, enjoys traveling, summers on Lake Champlain in his native VT and winters in FL.

Kieslich Analytics VT

150 Beach Road
Colchester, Vermont USA 05446
Email: Akieslich@aol.com
Cell: 617-593-9807
Web: Kieslichanalytics.com

Kieslich Analytics FL

12242 Championship Circle
Fort Myers, Florida USA 33913
Email: Akieslich@aol.com
Cell: 617-593-9807
Web: Kieslichanalytics.com